



WORLD
RESOURCES
INSTITUTE

Reckoning and Recovery

Working Toward a More Equitable and Sustainable Future

WRI ANNUAL REPORT | 2020-2021

Engage with WRI

Become an active part of WRI's growing community helping to protect the planet and improve people's lives.

ONLINE

Follow **@WorldResources** to join the conversation and share our ideas on Facebook, Twitter and Instagram, or connect with us on LinkedIn.

WRI DIGEST

Sign up for the weekly WRI Digest at **www.wri.org** and keep up with our latest analyses, insights, events and more.

SUSTAINER'S CIRCLE

Individuals who provide \$1,000 or more in annual support help WRI respond to emerging opportunities, seed new work and invest in innovation. Members receive updates tailored to their interests, invitations to events and briefings, and a quarterly newsletter highlighting WRI's recent work.

GLOBAL LEADERSHIP COUNCIL

Members of this invitation-only group of business, scientific, philanthropic and civic leaders help enhance WRI's profile and effectiveness. Council members help steer the Institute's programs and participate in serious discussions on today's most pressing environment and development issues.

CORPORATE CONSULTATIVE GROUP (CCG)

This global, cross-industry network is composed of more than 35 companies that provide philanthropic support, collaborate with our experts and engage with our cutting-edge research and data tools to accelerate sustainable business solutions.

NEW! LEGACY SOCIETY

The WRI Legacy Society is a new program for individuals who make planned gifts to WRI through a will, life insurance policy or estate plan. Receive updates on the issues you care about most, as well as invitations to special events with opportunities to meet WRI experts and other donors committed to making lasting investments that benefit our planet and future generations.

Table of Contents

A Message from our Board	2
Our Global Network	6
A Conversation with Manish Bapna	8
WRI in Action	10
Reflections from Andrew Steer.....	24
Boards & Leadership	26
Operations & Finance	32
Thanking Our Donors.....	36

WRI's mission is to move human society to live in ways that protect Earth's environment and its capacity to provide for the needs and aspirations of current and future generations.

A Message from Our Board

2020 was a year like no other. The pandemic upended lives, cutting far too many tragically short, and the pervasiveness of social injustice and racism was on display.

Everyone has been touched by the pandemic, but it has struck vulnerable and marginalized communities hardest, revealing deep inequities across society.

At the same time, we see rays of hope—we can envision a world where people come together around common challenges and nature is prioritized. In the rise of the Black Lives Matter movement, as well as in the voices of climate activists and environmental defenders, a growing wave of people are standing up for a better, more equitable future. As the vaccine becomes more widely available, communities are beginning to bounce back. Human resilience cannot be denied.

As WRI's Global Board Chairs and Co-Chairs, we are responsible for ensuring that the organization is on sound footing and guided by a clear strategic vision. This is especially true during these turbulent times. Over the past year, WRI has continued to focus on the interrelated challenges at the heart of its mission: climate, nature, economics and

human development. Of course, staff had to adapt how they work—and they did. Thanks to the generosity and dedication of our partners and donors, who stuck with us through these difficult circumstances, the Institute pivoted quickly. WRI not only continued to run on all cylinders, but it made progress on core issues that exceeded our expectations.

We learned many lessons from 2020—about vulnerability and resilience and the importance of strong institutions and global cooperation. These lessons are increasingly embedded in WRI's strategy and programs. Inclusion and equity have always been important to WRI; now we are making sure they are fully integrated into the Institute's research agenda and recommendations.

WRI is also undergoing its own transition. After more than eight years, Andrew Steer has left the Institute to become the President and CEO of the Bezos Earth Fund. We are grateful to Andrew for his leadership and excited for him about this opportunity. Andrew left a bright mark on WRI, one which will continue to shine for years to come. During his tenure, he helped refocus WRI's programs, sharpened its vision, expanded its reach and recruited many new partners. He pushed WRI

to act boldly by emphasizing the importance of collaboration and catalyzing coalitions to drive systemic change. Thankfully, Andrew drew together a strong core of leaders and dedicated staff who will carry the mission forward.

We feel very fortunate that Manish Bapna has agreed to serve as Interim President and CEO. Manish, who is known for his sharp intellect and thoughtful demeanor, has been central to advancing WRI's strategy over the last decade. We have full confidence in him and the rest of the leadership team, who will ensure that the Institute delivers on its agenda.

This is a critical year in a decisive decade. We are not naive about the challenges, but we firmly believe brighter days are approaching. The new U.S. administration has rejoined the Paris Agreement and has signaled its interest in working collectively to address climate

change and other global challenges. More than 100 countries have committed to net zero emissions by midcentury. More than 1,200 companies have committed to set science-based emissions targets. Automobile manufacturers are expanding their fleets of electric vehicles, customers are embracing plant-based diets and communities are restoring degraded lands.

As we look beyond the pandemic, we envision a world that has closed the gap in inequity, drastically cut carbon emissions and better manages natural resources to improve the lives of all people.

We are grateful to all our partners and especially the donors who continue to generously support WRI on this journey. Together, we will continue to push toward the goal of a better and brighter future.

With best regards,



David Blood
Co-Chair
WRI Global Board of Directors



Pam Flaherty
Vice Chair
WRI Global Board of Directors



James Harmon
Co-Chair
WRI Global Board of Directors



Sue Tierney
Vice Chair
WRI Global Board of Directors



“ Over the past decade, WRI has raised its profile as a leading organization, working with broad coalitions to drive transformative shifts in thinking and action. This approach is more urgent than ever to get the world on course to a safer and stronger future.”

—**Christiana Figueres**

Founding Partner, Global Optimism
Former Executive Secretary, UNFCCC
WRI Global Board of Directors



Our Approach

WRI is a global, non-profit organization that works with governments, businesses and civil society to advance practical solutions that simultaneously improve people's lives and ensure that natural systems thrive.

In working to achieve global change, we apply a threefold approach:

COUNT IT

We start with data, creating user-friendly information systems, protocols and standards. We conduct independent, unbiased research to design solutions and communicate our findings in a compelling manner.

CHANGE IT

We work with communities and leaders of cities, companies and countries to achieve change, testing and adapting solutions in complex, real-world situations. We set clear objectives and hold ourselves accountable.

SCALE IT

We identify and overcome barriers to change so that proven solutions spread quickly and widely. We create innovative coalitions that transform business sectors, societies and economies, nationally and globally. We achieve our greatest impacts through partnerships.

Our Global Network

WRI operates on five continents. Our 12 offices are united by our shared Count It, Change It, Scale It approach. Our global network advances rapid, systemic change in response to urgent environmental challenges while creating opportunities for inclusive growth and prosperity for all.

Africa

Through WRI Africa, we have been expanding our presence on the continent with a strong focus on conducting research and analysis and building partnerships to spur equitable economic growth and sustainable development. Our work spans 14 African countries, supported by offices in Kenya, the Democratic Republic of Congo, and Madagascar, as well as a regional hub in Ethiopia. Our WRI Africa strategy emphasizes developing solutions for Africa by Africans, informed by WRI's global research, data and technology.

Brazil

WRI Brasil is helping the country build back better from the COVID-19 crisis while tackling long-standing environment and development challenges. We conduct independent analysis and provide recommendations to spur inclusive urban development, reimagine mobility

systems, scale up landscape restoration and make the economic case for inclusive low-carbon development in Brazil and the Amazon region.

China

Supporting China's pledge to achieve carbon neutrality by 2060 and its 14th Five-Year Plan, WRI China develops comprehensive strategies that create opportunities for cities and regions to peak their carbon emissions before 2030. Our goal is to shift Chinese investments toward renewable energy and low-carbon technologies and to make supply chains more resilient.

Europe

WRI Europe works with the European Commission, national governments, companies and civil society organizations to support European leadership on climate, the environment and human development, including the continent's contribution to the

global recovery from COVID-19. With offices in The Hague and London, we foster innovative partnerships with government donors, foundations and thought leaders, working across WRI's seven global programs.

India

WRI India provides evidence-based research and analysis on cities, energy, forests, resilience and climate that inform decision-making by government officials and business leaders. Our work aims to facilitate just transitions associated with the shift to clean energy, reductions in greenhouse gas emissions and the restoration of landscapes to help India mainstream resilience into development planning.

Indonesia

WRI Indonesia works with government officials to build back better from COVID-19 and advance sustainable economic growth through Indonesia's new low-carbon development initiative. Our programs support sustainable agriculture production and protect intact forests while expanding clean energy

access, enhancing food security, cutting greenhouse gas emissions and reducing marine plastics.

Mexico

WRI México focuses on climate, cities, forests, energy and the ocean. We work with federal and local governments and the private sector to increase climate ambition in Mexico as well as Colombia, where WRI recently opened an office. In 2020, we supported the response and recovery from the pandemic by focusing on social equity and climate justice.

United States

Our U.S. team collaborates with local, city, state and national leaders; members of Congress; and the Biden administration to accelerate the shift to a strong, equitable, zero-carbon economy. We focus on opportunities to decarbonize the economy, especially in transport and industry, and to promote a green and fair recovery from COVID-19. We also work to bolster U.S. engagement in the international arena on climate change and related global challenges.



“ As we look to the world after COVID-19, we need to ensure that countries recover in a way that makes them stronger. Nowhere is this more critical than in Africa. I'm excited about WRI's new strategy for Africa which aims not only to improve people's lives, but to make them more resilient for the future.”

—Carlos Lopes

Professor, Nelson Mandela School of Public Governance
University of Cape Town, WRI Global Board of Directors

A Conversation with Manish Bapna

With the departure of Andrew Steer from WRI in April 2021, Manish Bapna was named as Interim President and CEO. Following is a conversation with Manish on the state of WRI and the road ahead.

Q: You've been with WRI for more than a decade. What changes have you seen?

A: WRI has gone through a radical transformation over the past decade. We have become a truly global organization. We've moved from having 250 staff mostly in Washington to over 1,400 staff, the majority located outside of the U.S.

This is in no small part a response to the diversification of economic and political power in the world.

Our motto is Count It, Change It, Scale It! We've always been very good at the Count It and Change It. In recent years, we've focused more on Scale It—how to reach tipping points, the role of coalitions and the need for system change.

We also increasingly recognize the importance of tackling poverty and inequality, especially as the world recovers from the COVID pandemic and economic crisis. We won't realize a sustainable future if people and equity aren't at the heart of our goals and strategies.

You grew up shuttling between Chicago and Udaipur, India. How has that experience informed your work?

My childhood was a tale of contrasts. I spent my early years in a middle-class suburb outside of Chicago. But I also spent summers with my family in Udaipur, a beautiful city surrounded by lakes, near the desert in western India. In Udaipur, growth and development led to rapid deforestation and industrial pollution. Year after year, I saw water become scarcer and air dirtier. I also saw how this affected the rich and poor differently—and how different this all was from my experience in Chicago during the school year. The issues of poverty, equity and justice and how connected they are to a healthy environment really stood out to me from a young age.

WRI tackles huge, complex issues. Progress can feel slow. What gives you hope?

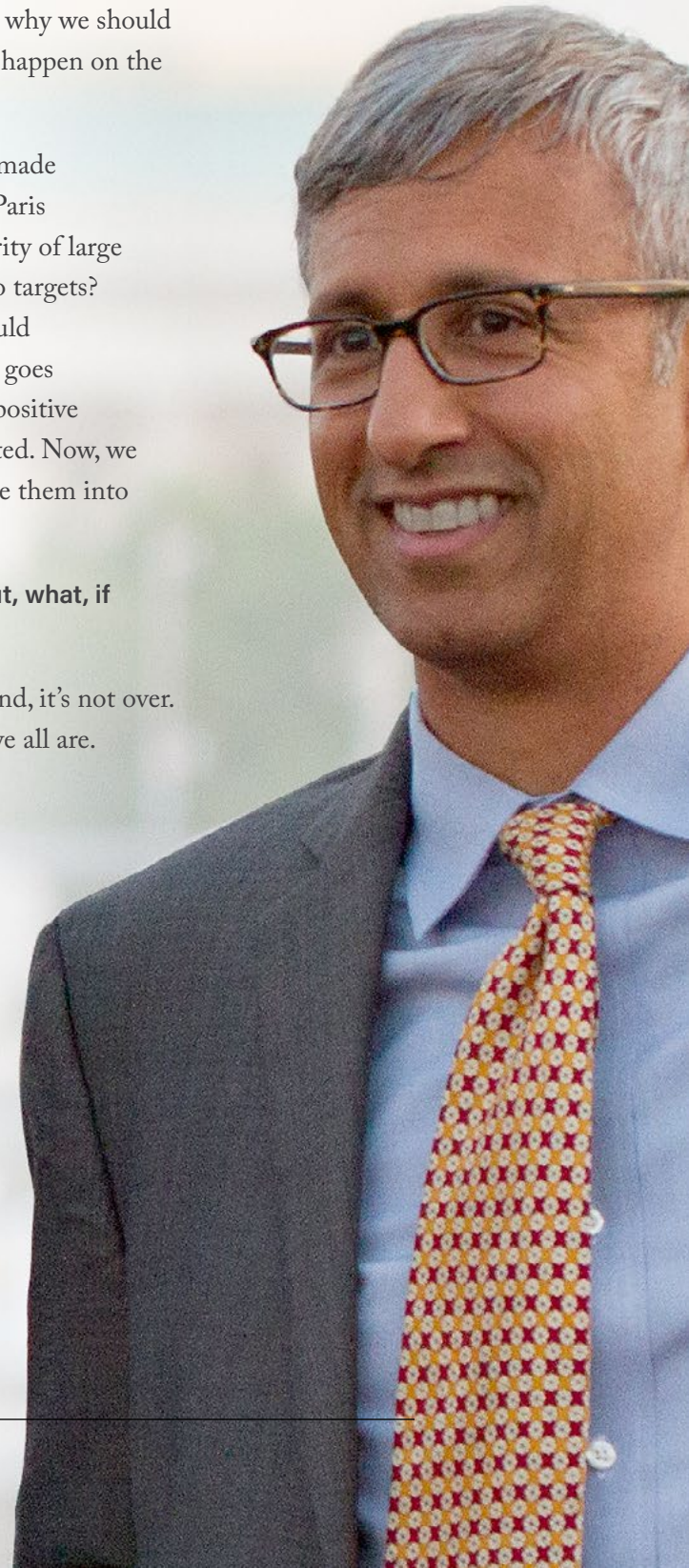
This is hard work. We focus on some of the most challenging problems facing society. But, at the same time, it can be very rewarding. We

have seen some huge shifts over the last decade. When it comes to the climate or nature crises, the question is no longer why we should act or what we need to do, it's about how we make it happen on the ground. It's about moving faster and at scale.

What gives me hope? When you step back, we have made exceptional progress, even in the five years since the Paris Agreement. Who would have thought that the majority of large countries would have made commitments to net-zero targets? Who would have thought 1,200 large companies would commit to science-based emissions targets? And this goes beyond climate, as people are talking about a nature positive future, and a future where extreme poverty is eradicated. Now, we need to add teeth to these commitments and translate them into near-term action.

This has been an exceptionally challenging year. But, what, if anything, might you want to carry forward?

First off, the past year has been brutal for so many. And, it's not over. The pandemic has revealed how inextricably linked we all are. To address a global challenge like the pandemic, we need a collective response. This is even more true for climate change, and related challenges such as food security, biodiversity, air pollution and ocean health. We also need a fairer response. A response that isn't inclusive won't be durable. We must not only build back better, but fairer, greener, and together. We need to carry these ideas forward, even after the pandemic has ended. If we do, we can get closer to achieving the world that we want.





WRI in Action

WRI focuses on seven urgent global challenges: Food, Forests, Water, Energy, Cities, Climate and the Ocean. In 2020, we adjusted our approach to respond to the pandemic while continuing to drive momentum on the interlocking issues of climate, equity, health and the economy.

Our Programs

FOOD

To help the world sustainably feed its people, WRI is catalyzing action to cut food loss and waste in half by 2030, shift toward plant-based diets, and make a compelling case for sustainable food and land use systems.

FORESTS

WRI protects forests against loss and degradation and restore forests in landscapes

where they are needed most. Our activities track forest change, combat deforestation and illegal logging, and help communities and businesses manage land more sustainably.

WATER

WRI works to increase water security. Our Aqueduct tools are the world's best source of information on global water risk and stress. Our Water, Peace, and Security Partnership early warning tool helps prevent water scarcity



from driving conflict and migration. Our Cities4Forests initiative promotes investments to protect watersheds and other natural systems.

ENERGY

WRI collaborates with policymakers, cities, companies, utilities, regulators and development institutions to secure a future in which people everywhere have access to affordable, clean and reliable energy.

CITIES

WRI Ross Center for Sustainable Cities helps turn cities into resilient, inclusive, low-carbon places that are good for people and the planet. Through applied research, tools and advice, our international network of experts works on innovative projects that put cities on a sustainable trajectory.

CLIMATE

WRI works with a wide range of leaders and other partners to advance strategies to cut greenhouse gas emissions while creating strong, job-rich, equitable and resilient economies. We develop tools and conduct analysis to help cities, companies and countries measure their emissions, set ambitious targets and take bold action.

OCEAN

WRI seeks to accelerate systemic shifts to support sustainable development and put the ocean on a path to recovery. We play a central role in two high-profile initiatives—the High Level Panel for a Sustainable Ocean Economy and the Friends of Ocean Action—to help drive a global ocean movement.

Four Centers of Excellence—Business, Economics, Finance and Governance—provide support to our programs through cross-cutting research, technical guidance and stakeholder engagement.

Our Centers of Excellence

BUSINESS

WRI's Center for Sustainable Business works to change the approach of business to make a positive contribution to human well-being and the environment. Our work centers on three main initiatives: The Science Based Targets initiative drives corporate action that aligns with planetary boundaries; we encourage circular economy models to promote alternatives to unchecked consumption; and we support policy engagement to shift business influence on government policy. WRI also plays a leadership role in two multi-stakeholder partnerships: PACE, which seeks to advance a circular economy, and P4G, which supports sustainable development through public-private partnerships.

ECONOMICS

The Economics Center conducts analysis and modeling to identify the opportunities, benefits and trade-offs in order to improve environmental management and advance climate action.

FINANCE

The Finance Center promotes the shift of global finance and investments away from environmentally destructive activities toward sustainable development. Through our data-driven and actionable research, we mobilize coalitions to inform financial decisions and investment strategies by governments, private sector investors, banks and multilateral institutions.

GOVERNANCE

The Governance Center aims to build a resilient, just and sustainable future by empowering people and advocating for equitable decision making. We promote people's rights and support their access to information to encourage decisions that address environmental justice issues, improve equity and support vulnerable communities.



“ I am deeply impressed with WRI's sharp, data-driven approach, which can support businesses to advance action when it comes to addressing climate change.”

—Jesper Brodin
President and CEO, Ingka Group
WRI Global Board of Directors

Focus on Diversity, Equity and Inclusion

To achieve our global goals, WRI brings together a workforce from diverse backgrounds, experiences and perspectives who share common values. As the challenges of climate change, racial injustice, inequity and poverty are inseparable, so too, are the solutions. We recognize that working with people from different backgrounds, races, ethnicities and socioeconomic status is pivotal to our success. Our position is clear: WRI welcomes and respects diversity in all forms.

In light of the events of 2020, we have begun to place greater emphasis on diversity, equity and inclusion where we work around the world. We are especially aware of the racism that persists in the United States. We are strengthening our commitment to diversity, equity and inclusion to ensure that all of our staff and partners are fully engaged and supported.

We recognize that we have further to go to become an anti-racist organization. We recently created two working committees, which complement our existing affinity groups, to develop strategies and take action. Our U.S.-based committee focuses on advancing anti-racism, while our global committee focuses on advancing justice and social inclusion throughout our teams, as well as in our program work. The committees will analyze conditions and recommend changes in behavior and structure to enhance talent recruitment and retention philosophy. We are also working with colleagues across our global network to strengthen cultural humility by better understanding different cultural dimensions and how these issues play out in different contexts. Then we will develop tailored strategies to advance equity in those settings.

In addition, WRI has established a new internship program, DreamGREEN, that aims to increase diversity. The program offers six-month paid positions to Black, Indigenous, and People of Color. In the coming year, we will also hire a senior team member, design and conduct a culture audit, implement a diversity recruitment plan, and help put equity and inclusion at the heart of our culture.

Our Top Outcomes

WRI tracks and evaluates our impact through our Outcomes—significant actions by governments, companies and civil society organizations that are at least in part catalyzed by WRI’s research, data, recommendations, engagement and coalition-building. Despite the pandemic, we made significant progress in 2020. Among dozens of outcomes across our global network, 10 stand out.

14 World Leaders Commit to a Sustainable Ocean Economy

Serving as secretariat to the High Level Panel for a Sustainable Ocean Economy, WRI helped secure commitments from 14 countries to sustainably manage 100% of their national waters by 2025 and endorse a set of priority actions to achieve a sustainable ocean economy by 2030. Our flagship report serves as a global reference guide on the components of a sustainable blue economy.

Important Economies Identify Opportunities for Climate Action

WRI conducted analysis, tracked commitments and engaged with influential champions and leaders to encourage China, Colombia,

the United States and Ethiopia to raise the ambition of their climate action and to identify opportunities to step up action in Brazil. These countries are demonstrating that there is a way forward for climate action, even in difficult contexts.

Cities Prioritize Public Transportation and Cycling in Response to COVID-19

COVID-19 generated urgent demand for mobility solutions that offer both space for physical distancing and protection from road safety risks. WRI’s insights supported the rapid implementation of safer, more sustainable cycling infrastructure and public transport systems in cities around the world.



Nearly 200 Food Suppliers Commit to Cut Food Loss and Waste in Half

WRI mobilized some of the world's largest food retailers, providers and suppliers to commit to halve their food loss and waste by 2030. These commitments signal that major players in the food industry are moving toward a model that prioritizes a sustainable food future.

12 Governments in Latin America and the Caribbean Ratify Treaty That Protects Environmental Defenders

WRI worked with civil society partners and governments in Latin America and the Caribbean—the world's most dangerous region for environmental activism—to support ratification of the Escazú Agreement, a historic treaty that will formally protect the lives and rights of environmental defenders.

Mexico Adds Fundamental Right to Mobility to Its Constitution

Mexican authorities, legislators and NGOs, including WRI México, worked together to encourage the Mexican government to make safe and clean mobility a constitutional human right. The constitutional amendment opens the door for a new mobility and road safety bill in Mexico and sets an example for other countries.

Indonesia and the Philippines Accelerate Clean Energy Transition

WRI and partners were critical in driving policy developments that helped Indonesia and the Philippines set pathways for increased production and use of renewable energy. These new policies will unlock public and private markets for renewable energy and spur new investments in affordable, clean economic development.





“ People around the world need access to affordable, reliable and clean power, while reducing threats from climate change. WRI’s strategic and pragmatic approach can play a critical role in solving this vexing challenge.”

—Lawrence E. Jones
Vice President, International Programs, Edison Electric Institute
WRI Global Board of Directors

Countries and Cities Embrace a New UN Decade for Road Safety

In 2020, the United Nations adopted a Second Decade of Action for Road Safety (2021–30), focused on linking road safety with sustainable development goals. WRI played a pivotal role in shaping the Declaration of Stockholm, which underpins the Second Decade of Action. It has already put its ideas into action to inform pedestrianization efforts in India, Turkey and other developing countries.

World Bank Unlocks \$2 Billion for Integrated Green and Gray Infrastructure

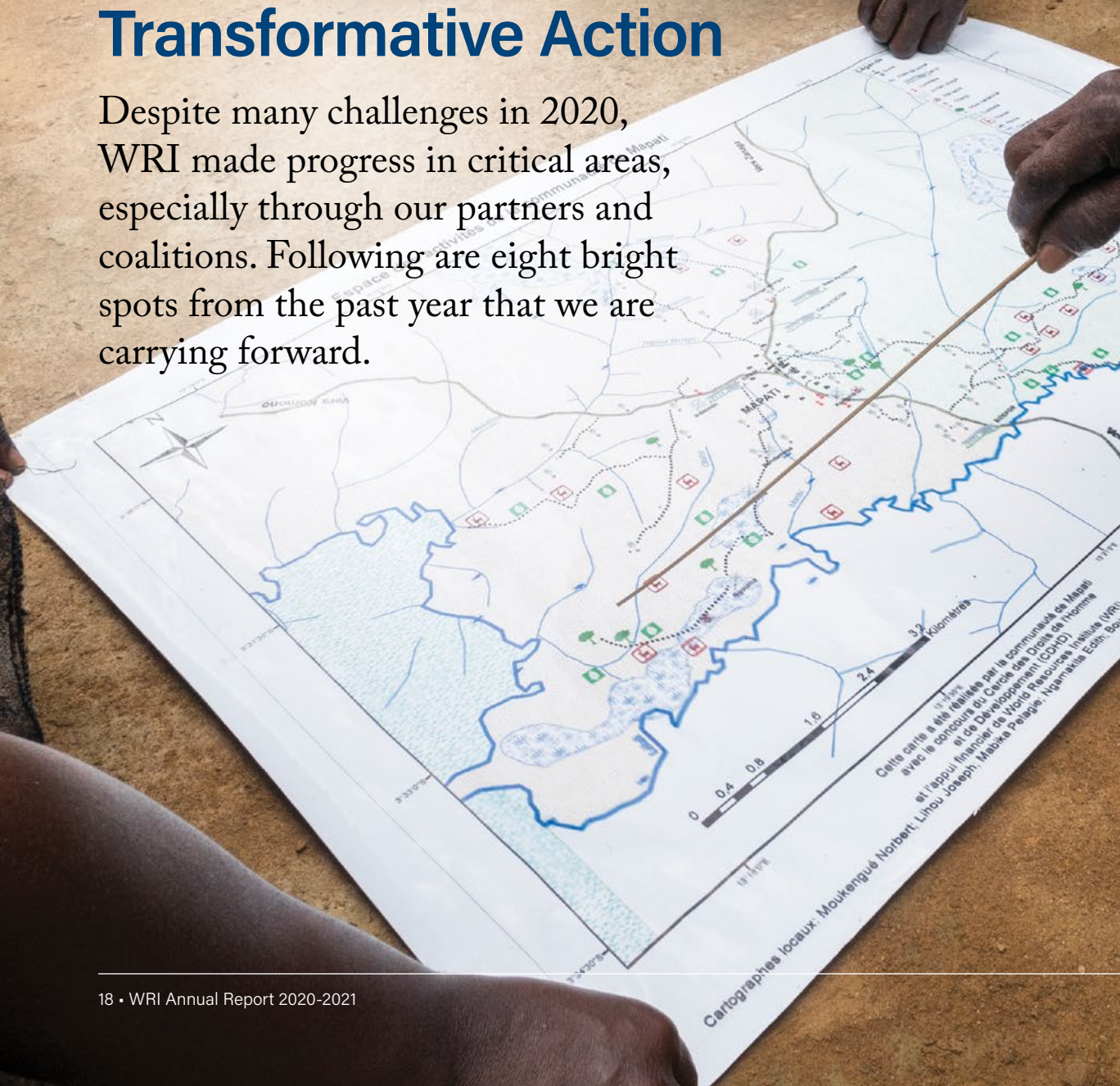
Working with WRI, the World Bank committed to integrated nature-based (green) and traditional, human-built (gray) infrastructure investments. Its action signaled to member countries and other development banks that integrating nature into infrastructure investments is a smart strategy for sustainable development.

India’s 15th Finance Commission Supports Air Quality and Forest Protection

WRI submitted analyses to inform the fiscal recommendations of India’s 15th Finance Commission, which introduced financing mechanisms for air quality governance and remains committed to ecological fiscal transfers and forest protections.

Spotlights: Mobilizing Transformative Action

Despite many challenges in 2020, WRI made progress in critical areas, especially through our partners and coalitions. Following are eight bright spots from the past year that we are carrying forward.





A New Strategy for Africa

To support sustainable development in Africa, WRI developed a new three-pillar strategy for Africa—one that puts women and youth at the center of inclusive transformation that will enable people and landscapes to flourish. The Vital Landscapes pillar will create productive and resilient rural areas that support livelihoods and enhance ecosystem services.

The Thriving, Resilient Cities pillar will steer Africa's rapid urbanization toward sustainable pathways. The Institutional and Economic Transformation pillar seeks to inform the enabling policies that support equitable economic growth, transparency and resilient development.



New Opportunities in the United States

The Biden administration has provided a surge of energy to U.S. climate action. It has already begun to pursue opportunities to expand renewable energy, enhance climate resilience, and advance the next generation of low-carbon technologies and manufacturing while simultaneously addressing historic injustices and ensuring that the energy transition benefits everyone.

year, we will analyze the job creation benefits of climate action in rural America, engage industry and private sector leaders on decarbonization opportunities, and work with members of Congress and federal agencies to accelerate the electrification of vehicles, with a focus on the fleet of 480,000 U.S. school buses.

WRI is working with leaders at all levels of government to seize this critical window for action. In the coming



Accelerating Adaptation

Since 2018, WRI has served as the co-managing partner of the Global Commission on Adaptation. We led the development of the Commission's landmark report, *Adapt Now*, which has shifted thinking about adaptation and inspired action by government decision-makers, business executives and communities.

WRI managed several initiatives in 2020, the Commission's Year of Action, including on finance, locally led action, agriculture, cities and nature-based solutions. Together with partners, we released the

Principles for Locally Led Adaptation, endorsed by more than 40 governments and organizations, and the 1,000 Cities Adapt Now Program, which aims to accelerate adaptation in 1,000 cities by 2030. The Commission's efforts culminated in the Climate Adaptation Summit, led by the Dutch government, in January 2021. WRI will continue to manage adaptation initiatives in the run-up to the climate summit in Glasgow (COP26) and beyond.



Greening the Belt and Road

WRI co-chairs the Greening the Belt and Road Coalition, an international network that seeks to shift investments in China's Belt and Road Initiative (BRI) in a sustainable direction. More than 140 countries are part of the BRI, which is investing billions of dollars in infrastructure, energy and related sectors. The direction of these investments will have a significant impact on global sustainability goals, as well as on China's vision for a more ecological society.

WRI works with the Coalition and other partners to shift financing from unsustainable investments toward

green ones and to improve environmental quality in cities. We have conducted research and made recommendations on how China can better green its supply chain, especially around soft commodities, such as soy, timber, beef, pulp and paper, and palm oil.

In 2021, we are supporting efforts to make China's foreign investments more sustainable. These actions could both reduce coal finance and encourage Chinese financial institutions to pursue renewable energy projects that help developing countries meet their climate goals.



Mobilizing National Climate Action

In order to achieve the vision of the Paris Agreement, countries need to raise their targets for emissions reductions, known as Nationally Determined Contributions (NDCs). At the end of 2020, more than 75 countries had set new targets for 2030, more than half of which are more ambitious than previous commitments. But many major emitters had yet to announce revised goals.

WRI supports countries by providing technical assistance, assessing and monitoring progress, and advising government leaders on their climate strategies. In 2020, we provided policymakers with guidance on potential synergies with their COVID-19 recovery efforts. Through the New Climate Economy, we worked with countries to identify pathways that

can deliver a green recovery, boost jobs and growth, and enhance climate ambition.

In addition, the NDC Partnership, a global coalition of countries and institutions hosted by WRI and the United Nations Framework Convention on Climate Change (UNFCCC), is supporting enhanced climate progress in more than 75 countries. The flagship Partnership in Action report, *Keeping Ambition Alive*, published last year, shows how member countries are mobilizing climate finance, integrating climate action in economic recovery plans, and identifying pathways to enhance their climate plans and actions. WRI and the NDC Partnership will continue to encourage countries to step up their commitments and action, especially in the lead-up to COP26.



“ Despite the year we’ve had, hope is on the horizon. We need to build back stronger and greener. We have the tools, technology and know-how to do things better. WRI is showing the way forward.”

—Tammie Arnold

Founding Partner, Alpha Ledger Technologies, Inc.
WRI Global Board of Directors



Improving Urban Air Quality

In 2020, USAID selected Clean Air Catalyst—a major proposal by WRI and the Environmental Defense Fund—as the agency’s new flagship air quality program. The \$20-million, five-year agreement helps cities in low- and middle-income countries reduce air pollution by advancing solutions that protect health, promote equity and tackle the climate crisis.

Through a global consortium, Clean Air Catalyst has begun work in two pilot cities: Indore, India, and

Jakarta, Indonesia. In 2021, the projects will bring together local stakeholders from government, universities and scientific organizations to analyze sources of pollution and address critical information gaps. The consortium will also assess public understanding of air pollution sources and build coalitions to deliver interventions in the most polluting sectors.



Rethinking Food and Land Use Systems

WRI serves as the secretariat of the Food and Land Use Coalition (FOLU), an initiative committed to transforming the way people produce and consume food and use land. In April 2020, FOLU members signed a Call to Action for World Leaders urging immediate steps to keep the food supply flowing across the world; scale support for the most vulnerable; and invest in sustainable, resilient food systems in response to COVID-19.

In addition to publishing global research products, FOLU continued to engage with its five focus countries (China, Colombia, Ethiopia, India and Indonesia), informing new agricultural policy reform agendas in Colombia and Ethiopia. It will continue to build support for these transformations in 2021, including by leveraging global events such as the UN Food System Summit and COP26.



Pathways for Corporate Emissions Reductions

The Science Based Targets initiative (SBTi) works with companies to set emissions reduction targets that are in line with the actions needed to achieve the Paris Agreement. More than 1,200 companies in 60 countries—with a combined capital value of \$20.5 trillion—have joined the SBTi. More than half of them have formally approved emissions reduction targets.

Companies with science-based targets have reduced their combined emissions by 25% since 2015. In 2020,

more than 150 companies signed a statement urging governments to align their COVID-19 economic aid and recovery efforts with climate science.

In 2021, SBTi will provide a standard for companies that are seeking to set net-zero targets, the first-ever such standard for the corporate sector.



Cool Food: Low-Carbon Menus

Shifting diets toward less resource-intensive food and plant-based meals reduces agriculture-related greenhouse gas emissions, which account for about a quarter of global emissions. In 2020, WRI announced a new way to calculate and certify emissions from meals, the Cool Food Meals badge. The badge, which is awarded to dishes with lower carbon footprints, enables consumers to make climate-friendly choices. Panera, a chain of 2,000 restaurants in the United States, became the first company to receive the certification, with over half of its entrees certified as Cool Food Meals.

WRI also leads the Cool Food Pledge, which helps restaurants, hospitals, hotels, universities and cities cut emissions from the food they serve. Forty organizations—which together serve nearly a billion meals a year—have signed up for the program. Within its first year, members collectively reduced food-related emissions by 4.6% overall and by 12% per plate. WRI will expand this program in 2021.

Reflections from Andrew Steer

The past eight years at WRI have been among the happiest and most productive of my career. Thanks to our brilliant staff and generous donors we've been blessed with inspiring growth in impact and reach.

With our partners, we have helped change the narrative on sustainable development from that of "costs and trade-offs" to that of "investments and opportunities." We have been at the forefront of demonstrating that the system changes we need are not only possible but, done right, will create a stronger economy, a fairer society, and a better future.

We've introduced important new technologies, platforms, and tools that are influencing decisions in Cabinet rooms and community meetings, in corporate boards, city halls and the global corridors of power.

In all this we've helped shift the needle towards hope.

Our biggest impact has been when we bring together the special ingredients that make us unique. This involves combining our globally respected data and research ("Count It") with our on-the-ground practical presence ("Change It") together with our policy engagement and convening ("Scale It").

A few common themes stand out about what makes us effective, and these are not just for WRI, but for other NGOs and organizations. We are most effective when:

- We diagnose the big picture but focus on our irresistible offer
- We lead but take our own flag down
 - We insist that data and rigorous analysis alone will drive our advice
 - We put the wellbeing of marginalized people at the center of how we think and act
 - We live our values every day

WRI's role in this decisive decade is more needed than ever. And the Institute is well equipped for the next phase. We have a superb Global Board, an inspiring team working across our 12 offices, and a deep bench of managers to lead the Institute to even greater impact. And we have wonderful donors and partners, who make it all possible.

Thank you!

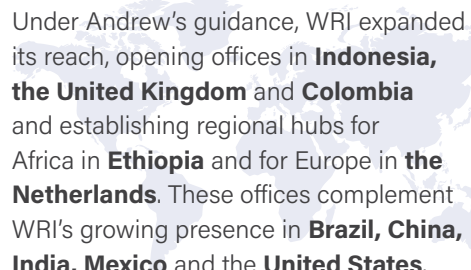
As President and CEO of WRI, from 2012 to 2021, Andrew Steer led the Institute through a period of growth in reach, size, influence and impact. In recognition of his remarkable contributions, we present Andrew's tenure **By the Numbers**.

7

By focusing the Institute on **seven urgent challenges**—food, forests, water, energy, cities, climate and the ocean—Andrew reinforced WRI's position as a thought leader on the world's most pressing challenges.

12

Under Andrew's guidance, WRI expanded its reach, opening offices in **Indonesia, the United Kingdom and Colombia** and establishing regional hubs for Africa in **Ethiopia** and for Europe in **the Netherlands**. These offices complement WRI's growing presence in **Brazil, China, India, Mexico** and the **United States**.



30+

Recognizing that partners are key to addressing urgent global challenges, Andrew helped WRI establish more than **30 initiatives, partnerships and commissions**, which allow WRI to think big and deliver impact at scale.



1,400

Thanks to Andrew's leadership, WRI now employs more than **1,400 experts, researchers and other professionals**, more than half of them outside the United States. The **fivefold increase since 2012** has helped WRI drive momentum and maximize its impact.

\$149M

Working closely with WRI's leaders, experts and development staff, Andrew boosted the Institute's total operating revenue to **\$149 million**—a **fourfold increase since 2012**—creating opportunities to expand our reach, launch new initiatives, and provide strong oversight and financial management.

13,560+

As WRI's top spokesperson, Andrew was **mentioned or quoted by media outlets** more than **13,560 times** during his tenure. His insights—shared through his writing and frequent media appearances—helped shape thinking and spur action.



Boards & Leadership

Titles are as of March 2021.

WRI GLOBAL BOARD

WRI's Global Board of Directors includes internationally renowned experts and global thought leaders who demonstrate extraordinary leadership on issues of sustainability. The Global Board is responsible for guiding WRI's mission, values and strategy, and for ensuring the financial integrity and effective resource management of the Institute.

James Harmon

Co-Chair

Chairman, Caravel Management LLC;
former President of the Export-Import Bank of
the United States

David Blood

Co-Chair

Co-founder and Senior Partner
Generation Investment Management

Pamela Flaherty

Vice Chair

Former President and CEO, Citi Foundation;
former Director of Corporate Citizenship, Citi

Susan Tierney

Vice Chair

Senior Advisor, Analysis Group, Inc.

Tamara Arnold

Founding Partner

Alpha Ledger Technologies, Inc.

Frances Beinecke

President Emerita and Honorary Trustee

Natural Resources Defense Council (NRDC)

Afsaneh Beschloss

Founder and CEO, RockCreek

Stephen Brenninkmeijer

Founder and Principal, Willows Investments

Chair, European Climate Foundation

Jesper Brodin

President and CEO, Ingka Group

Felipe Calderón

Honorary Chair

The Global Commission on the Economy and

Climate; Former President of Mexico

Robin Chase

Founder, Zipcar, Veniam, NUMO



William Chen

Founding Managing Partner, ClearVue Partners

Dino Patti Djatal

Founder, Foreign Policy Community of Indonesia
Former Deputy Foreign Minister for the United States, Republic of Indonesia

Christiana Figueres

Founding Partner, Global Optimism
Former Executive Secretary, United Nations Framework Convention on Climate Change (UNFCCC)

Jamshyd Godrej

Chairman and Managing Director
Godrej & Boyce Mfg. Co. Ltd.

Lawrence Jones

Vice President, International Programs
Edison Electric Institute (EEI)

Caio Koch-Weser

Chair, Advisory Council, European Climate Foundation;
Former Vice Chairman, Deutsche Bank Group

Joaquim Levy

Director of Economic Strategy and Market Relations, Banco Safra, Brazil

Carlos Lopes

Professor, Nelson Mandela School of Public Governance, University of Cape Town
Former Executive Secretary, Economic Commission for Africa

Kathleen McLaughlin

Executive Vice President and Chief Sustainability Officer, Walmart Inc.
President, Walmart Foundation

Nader Mousavizadeh

Co-Founder and Partner, Macro Advisory Partners

Mari Pangestu

Managing Director of Development Policy and Partnerships, The World Bank

Michael Polsky

President and CEO, Invenergy

Stephen Ross

Chairman and Founder, The Related Companies

Roger Sant

Chairman, The Summit Foundation; Co-Founder and Chairman Emeritus, The AES Corporation

Jennifer Scully-Lerner

Vice President of Private Wealth Management
Goldman Sachs

Andrew Steer

President and CEO, World Resources Institute

Clinton Vince

Chair, Global Energy Practice, Dentons US

Daniel Weiss

Co-Founder and Managing Partner
Angeleno Group

GLOBAL LEADERSHIP COUNCIL

Members help steer the Institute's overall strategy and engage in our work based on their interests and expertise.

Frances Beinecke

Co-Chair

Daniel Weiss

Co-Chair

Clint Vince

Co-Founder

Elizabeth Belfer

Equity Analyst, Belfer Management, LLC

Ambassador Robert O. Blake, Jr.

Senior Director, McLarty Associates

David Brewster

Environmental Entrepreneur

Brian Cox

President, MFX Solutions

Steve Chadima

Chief Marketing Officer, Wildfire Alliance

Leslie Dach

Chair, Protect Our Care

Tim Disney

Chairman, CalArts

Timothy P. Dunn

Chief Investment Officer, Managing Member
Founder, Terra Alpha Investments, LLC

Peter Fox-Penner

Director, Boston University Institute for Sustainable Energy; Professor of the Practice
Questrom School of Business

Bob Gee

President, Gee Strategies

Lisa Genasci

CEO, ADM Capital Foundation

Paula Gold-Williams

President and CEO, CPS Energy

Peter Graham

Partner, One Better Ventures

Jason Haggins

Executive Director, Sall Family Foundation

Douglas Harmon

Chairman, Capital Markets
Cushman & Wakefield

W. Andrew Jack

Partner, Covington & Burling LLP

H.R.H. Prince Jaime de Bourbon Parme

Senior Advisor, Private Sector Partnerships
United Nations High Commissioner for Refugees

Peter S. Knight

Managing Partner, Cyan Capital Partners

Krista Kurth

Climate Activist, Author

Ann MacDougall

Co-Founder and CEO, Dunollie Fund

Jonathan Matz

Managing Director, Goldman Sachs & Co. LLC

Jeff McDermott

Founder and Head, Nomura Greentech

Dan Morrow

Independent Consultant

Leslie Myers

President, Hot Girls Pearls

Rolando Nuñez Baza

Director of Global Strategic Partnerships
Khan Academy

Morgan O'Brien

Executive Chairman, Anterix

David Richardson

Executive Director, Global Client Service
& Business Development, Impax Asset
Management

Dorothy Robyn

Senior Fellow, Boston University Institute for
Sustainable Energy

Theodore Roosevelt IV

Managing Director & Chairman
Barclay's Clean Tech Initiative

Alison Sander

Director, Center for Sensing and Mining the
Future, Boston Consulting Group

Edward L. Strohhahn

Counsel (Retired), Morgan Lewis

Lee M. Thomas

Former Administrator, U.S. EPA

INTERNATIONAL OFFICES**WRI Brasil Board of Directors****Marcelo Furtado****Chair**

Executive Director, Instituto Alana

Manish Bapna

Executive Vice President and
Managing Director, WRI

Franklin Feder

Former Vice President, Alcoa

Leonardo Colombo Fleck

Program Officer, Conservation and Markets
Initiatives, Gordon and Betty Moore Foundation

Denise Lanfredi Tosetti Hills Lopes

Global Sustainability Director, Natura

Valmir Ortega

Partner, Geoplus Geotecnologia

Janet Ranganathan

Vice President for Research, Data
and Innovation, WRI

Anamaria Schindler

Co-President Emeritus, Ashoka

Orlando Strambi

Professor, University of São Paulo
Department of Transportation Engineering

Johannes Henricus Maria Van de Ven

Managing Director, Good Energies Foundation

WRI India Board of Directors

Jamshyd Godrej

Chair

Chairman and Managing Director
Godrej & Boyce Mfg. Co. Ltd.

Ashok Khosla

Chairman, Development Alternatives Group

Shashishekhar Pandit

Chairman and Group CEO
KPIT Technologies Ltd

Navroz Dubash

Professor, Centre for Policy Research

WRI Indonesia Board of Directors

Dino Patti Djalal

Chair

Founder, Foreign Policy Community of Indonesia
Former Deputy Foreign Minister for the United States, Republic of Indonesia

Desi Anwar

Director, Senior Anchor, Correspondent
CNN Indonesia TV

Dharsono Hartono

President Director, PT Rimba Makmur Utama

Kuntoro Mangkusubroto

Former Head of Presidential Delivery Unit for
Development Monitoring and Oversight
Republic of Indonesia

Handry Satriago

CEO, General Electric Indonesia

Andrew Steer

President and CEO, WRI

WRI China Advisory Committee Members

Zhou Dadi

Former General Director of Energy Research
Institute, NDRC; Vice Chairman, National Energy
Advisory Committee

He Jiankun

Former Vice President, Tsinghua University;
Deputy Director of National Climate Change
Experts Committee

Wang Hao

Director of Water Research Institute, Institute of
Water Conservancy and Hydroelectric Power
Research

Zhang Yue

Former DG, MoHURD, Chairman of the Water
Industry Association, China Civil Engineering
Society; Former Director, Urban Water
Management Office

Li Nuyun

Deputy Director, State Forestry Administration's
Climate Office; Executive Vice President, China
Green Carbon Fund Foundation; Former Director,
Chief Engineer and Deputy Director, Afforestation
Department, State Forestry Administration

Zhang Shiqiu

Professor, Peking University

Qiu Baoxing

Former Vice Minister, Housing and Urban-Rural
Development of P. R. China Counsellor of the
State Council, China

LI Xiaojiang

Former President, China Urban Planning and
Design Institute

Zhang Fusuo

Academician, Chinese Academy of Engineering; Director, Center for Resources, Environment and Food Security of China Agricultural University

Fan Shenggen

Co-Chair, Global Ambassador Network of Food and Land Use Coalition; Dean, Academy of Global Food Economics and Policy, China Agricultural University; Former Director General, International Food Policy Research Institute

WRI Europe Board of Directors**Andrew Steer**

Chair

President and CEO, WRI

Elizabeth Cook

Vice President for Institutional Strategy and Development, WRI

Becky Marshall

Chief of Staff, WRI

Janet Ranganathan

Vice President for Research, Data and Innovation, WRI

WRI México Board of Directors**Cecilia Martínez**

Chair

Former Regional Director, UN-HABITAT

Rolando Núñez Baza

Head of Latin America, Khan Academy

Ani Dasgupta

Global Director, WRI Ross Center for Sustainable Cities

Julia Carabias

Professor, National Autonomous University of Mexico; Former Secretariat, Environment and Natural Resources

Sergio Chagoya Díaz

Partner, Santamarina y Steta, S.C.

Adrián Fernández

CEO, Climate Works

Ignacio García

General Director, Cummins Mexico

Ernesto Hanhausen

Managing Director, Emerging Energy and Environment, LLC.

José Saruhkan Kermez

Former Rector of UNAM and Science Adviser of Mexico's Government

Adriana de Almeida Lobo

Director, WRI México

Enrique Norten

Founder, Ten Arquitectos

Eugene Towle Wachenheim

Managing Partner, Softec Real Estate Consulting

WRI Council of Board Chairs**Dino Patti Djalal**

Chair

WRI Indonesia Board Chair

Cecilia Martínez

Vice-Chair

WRI México Board Chair

Marcelo Furtado

WRI Brasil Board Chair

David Blood

Global Board Co-Chair

Jamshyd Godrej

WRI India Board Chair

Operations & Finance

The trust of our supporters is one of our highest priorities. We receive donations from individuals, governments, foundations and corporations, and we have stringent financial controls in place to ensure compliance with donors' wishes.





Thanks to the generosity of our donors, we were able to strengthen our internal systems so that we could continue to effectively manage and steward our resources and deepen our impact. Despite the pandemic, we increased our program investments in 2020, as we pursued our goal of rapid, systemic change.

FINANCIAL STABILITY

WRI entered 2021 in strong financial condition. Program spending increased 12%, to \$144 million. WRI received the highest unqualified audit opinion in FY20. Charity Navigator rated WRI as one of its Top 10 Charities, among large, complex organizations with budgets exceeding \$100 million and at least \$65 million in net assets, citing in particular our “exceptional financial management.”

SHIFTING HOW WE WORK

Like almost all organizations, WRI had to adapt quickly to novel working conditions in 2020. Thanks to our operations and IT teams, we made constant improvements to our information and communications technology that allowed us to continue to operate effectively across our network.

WRI’s Crisis Management Team and Reopening Task Force monitored health reports and regulations, providing leadership and staff with timely updates. Our approach to reopening our offices will prioritize the well-being of our staff and reflect the range of conditions in different locations.



“ With its strong leadership team and deep bench of experts, WRI has built a reputation for sharp analysis and high impact. I can’t wait to see where it goes in its next chapter!”

—Frances Beinecke

President Emerita and Honorary Trustee
Natural Resources Defense Council (NRDC)
WRI Global Board of Directors

Operations & Finance (continued)

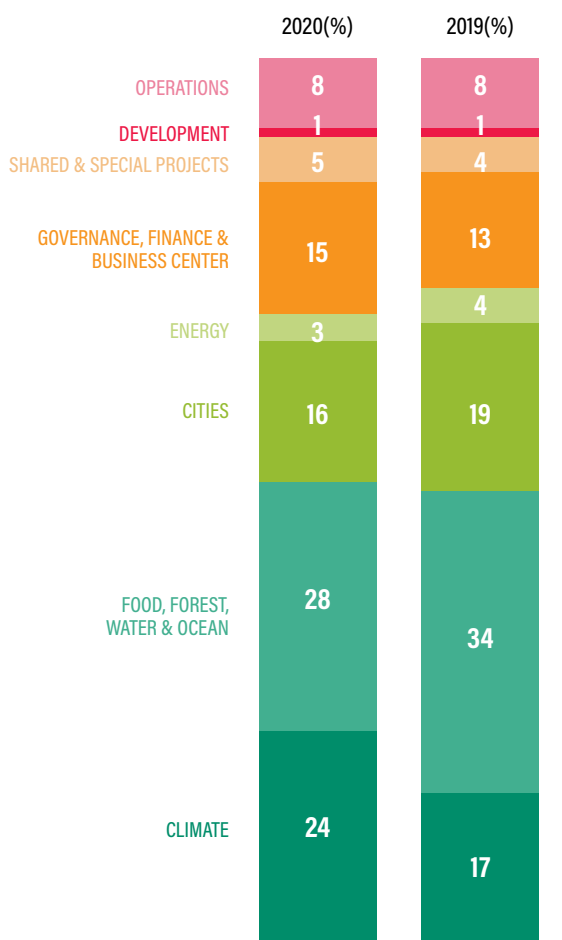
Statement of Consolidated Activities (\$000s)

(At September 30, 2020, with comparative totals for 2019)

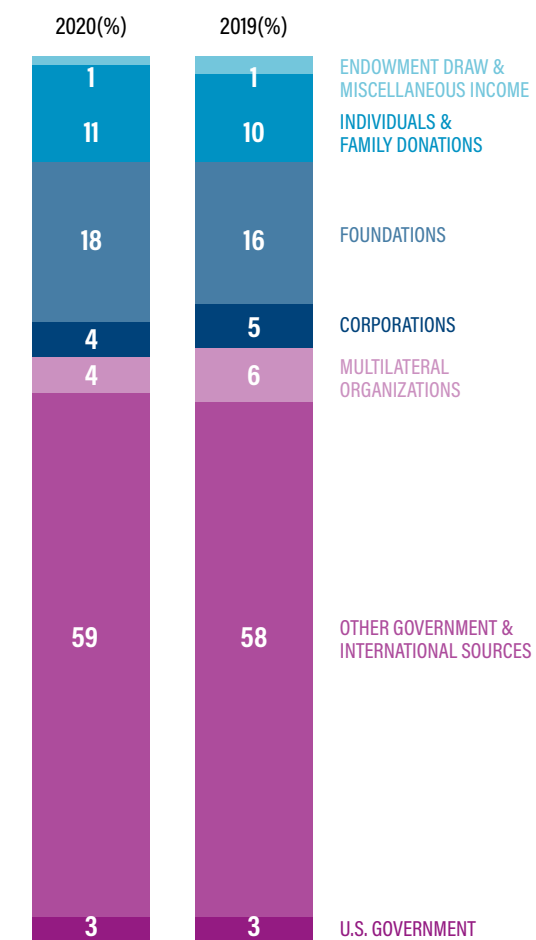
SOURCES OF OPERATING FUNDS - WITHOUT DONOR RESTRICTIONS		
	2020	2019
Grants/Contributions	\$143,082	\$125,733
Federal Grants	3,778	4,502
Support from Endowment Income/Others	2,085	1,907
Total Revenues and Other Support	148,945	132,142
EXPENSES		
Program Activities	131,066	116,716
General Administration	11,561	10,022
Development	1,288	2,003
Total Expenses	143,916	128,741
Change in Operating Net Assets	5,029	3,400
Total Net Assets at the Beginning of the Fiscal Year	148,109	114,869
CHANGE IN NET ASSETS DURING THE FISCAL YEAR		
Net Assets without Donor Restrictions	5,029	3,400
Net Assets with Donor Restrictions	86,949	32,473
Nonoperating Activities	2,190	(2,633)
Total Change in Net Assets	94,169	33,240
Ending Net Assets	242,278	148,109



Uses of Operating Funds



Operating Revenue





Thanking Our Donors

Every year as we prepare our Annual Report, we look back with deep gratitude at the vision and generosity of our donors, without whom our work would not be possible.

We are especially grateful this year, as many donors maintained or increased their support, enabling us to thrive despite the challenges of 2020. We are very proud to recognize this broad group of supporters, who share our commitment to creating a more sustainable and prosperous world for all.

This fiscal year, WRI raised \$225 million in revenue—from governments, corporations, foundations and individuals. We are grateful to have received several large, multi-year grants,

including \$19.7 million from **USAID** for work on air quality and more than \$10 million from **HSBC** for work on climate change.

We received \$10.8 million in flexible core funds from the governments of **Denmark, the Netherlands** and **Sweden**. This support is critical in helping us reduce poverty and support sustainable development. We are also grateful to the governments of **Germany, France, the United Kingdom** and **Norway** for their generous programmatic support.



Foundations continue to be among WRI's most important supporters and partners. This year, we received multi-year grants from **Bloomberg Philanthropies** to continue our work on global road safety, the **Children's Investment Fund Foundation (CIFF)** for our Greening the Belt and Road Initiative and **Stichting DOB Ecology** for renewed support for Resource Watch.

Unrestricted revenue from individuals, family foundations and corporate donors reached \$6.5 million in FY20. These funds allow us to explore nascent issues, leverage additional revenue, and invest in the institutional staff and processes to support our global goals.

WRI's Global Board of Directors provides strong oversight and philanthropic support. **Stephen M. Ross Philanthropies** made a new \$63.5 million commitment in 2020 to expand the work of the WRI Ross Center for Sustainable Cities, bringing Stephen Ross's total giving to WRI to more than \$100 million. **Michael Polsky** renewed his generous support for the Polsky Chair for Renewable Energy.

In the following pages, we proudly recognize all donors who made contributions of \$1,000 or more, enabling our work and mission.



2020 Donor Listings

(includes revenue received between October 2, 2019 and January 15, 2021 and older grants still open as of October 1, 2019)

MAJOR DONORS (\$750,000+)

Acacia Conservation Fund	David K. Smoot Sustainability of Life on Earth Fund	Global Environment Facility (GEF) Climate Change Mitigation Unit
Agence Française de Développement (AFD)	Department for Business, Energy and Industrial Strategy of the United Kingdom (BEIS)	Good Energies Foundation
Asian Development Bank (ADB)	Doris Duke Charitable Foundation	Gordon and Betty Moore Foundation
Bank of America	European Climate Foundation	HSBC Holdings PLC
Bernard and Anne Spitzer Charitable Fund	Federal Ministry for Economic Cooperation and Development of Germany (BMZ)	Humanist Institute for Cooperation with Developing Countries (Hivos)
Bezos Earth Fund	Federal Ministry for the Environment, Nature Conservation, Building and Nuclear Safety of Germany (BMU)	IHE Delft Foundation
Bill & Melinda Gates Foundation	FedEx Corporation	IKEA Foundation
Bloomberg Philanthropies	FEMSA Foundation	Irish Aid, Department of Foreign Affairs and Trade
Cargill, Inc.	Ford Foundation	John D. and Catherine T. MacArthur Foundation
Charles Stewart Mott Foundation	German Agency for International Cooperation (GIZ)	Laudes Foundation
Children's Investment Fund Foundation	Global Center on Adaptation	Linden Trust for Conservation
Citi Foundation	Global Environment Facility (GEF)	MacDoch Foundation
Climate and Land Use Alliance		Microsoft
ClimateWorks Foundation		Ministry for Europe and Foreign Affairs of France
David Blood		



Ministry of Foreign Affairs of Sweden

Ministry of Foreign Affairs of the Netherlands (DGIS)

Ministry of Infrastructure and Water Management of the Netherlands

National Geographic Society

Oak Foundation

Open Society Foundations

Pact

Patrick J. McGovern Foundation

Michael Polsky

Roger Sant and Doris Matsui

Royal Danish Ministry of Foreign Affairs (Danida)

Royal Norwegian Ministry of Climate and Environment

Royal Norwegian Ministry of Foreign Affairs

Ruth McCormick Tankersley Charitable Trust

Shell Foundation

Stephen M. Ross Philanthropies

Stichting DOB Ecology

Swedish International Development Cooperation Agency (Sida)

The Tilia Fund

Toyota Mobility Foundation

U.K. Department for International Development (DFID)

United Nations Environment Programme (UNEP)

United Nations Office for Project Services (UNOPS)

UPS Foundation

U.S. Agency for International Development (USAID)

U.S. Department of State

U.S. Forest Service International Programs

Walmart Foundation

William and Flora Hewlett Foundation

World Bank

World Economic Forum

Anonymous (4)



“ I am proud of the work that WRI Ross Center has done to improve how cities are designed by focusing on the benefits cities can bring to the environment and people. Now is the time to build on this foundation to bring sustainable cities to more people.”

—**Stephen Ross**
Chairman and Founder, Related Companies
WRI Global Board of Directors

GOVERNMENTS AND MULTILATERAL ORGANIZATIONS

Strategic Core Funding Partners

Agence Française de
Développement (AFD)

Ministry of Foreign Affairs of the
Netherlands (DGIS)

Royal Danish Ministry of Foreign
Affairs (Danida)

Swedish International
Development Cooperation
Agency (Sida)

Program/Project Partners

Asian Development Bank (ADB)

City of Philadelphia

Department for Business,
Energy, and Industrial Strategy
of the United Kingdom (BEIS)

Department of Energy and
Climate Change of the United
Kingdom

Department for Environment,
Food, and Rural Affairs of the
United Kingdom

Department of Communications,
Climate Action & Environment
of Ireland

Department of Foreign Affairs
and Trade of Australia

Embassy of the Kingdom of
Denmark in Beijing

Embassy of the United States of
America in China

Environmental Protection
Agency of Sweden

European Bank for
Reconstruction and
Development (EBRD)

European Commission (EC)

European Forest Institute (EFI)

Federal Ministry for Economic
Cooperation and Development
of Germany (BMZ)

Federal Ministry for the
Environment, Nature
Conservation, Building and
Nuclear Safety of Germany
(BMU)

Food and Agriculture
Organization of the United
Nations (FAO)

The Forestry Development
Authority of Liberia

German Agency for International
Cooperation (GIZ)

Global Environment Facility
(GEF)

Inter-American Development
Bank (IDB)

Italian Ministry of Environment,
Land and Sea

Japan International Cooperation
Agency (JICA)

Maryland Department of
Agriculture

Ministry for Europe and Foreign
Affairs of France

Ministry of Agriculture, Nature
and Food Quality of the
Netherlands

Ministry of Environment
of Poland

Ministry of the Environment
and Energy of Sweden

Ministry of Foreign Affairs
of Sweden

Ministry of Infrastructure and
Water Management of the
Netherlands

Municipality of The Hague

National Environment Agency
of Singapore

Overseas Environmental
Cooperation Center, Japan
(OECC)

Royal Norwegian Ministry
of Climate and Environment

Royal Norwegian Ministry of
Foreign Affairs

Swiss Agency for Development
and Cooperation (SDC)

Swiss Federal Office for the
Environment (FOEN)

U.K. Department for
International Development
(DFID)

U.S. Agency for International
Development (USAID)

U.S. Department of Agriculture
(USDA)

U.S. Department of Energy

U.S. Department of State

U.S. Forest Service
International Programs

United Nations Environment
Programme World Conservation
Monitoring Center (UNEP-
WCMC)

GROWALD FAMILY FUND

The Growald Family Fund's investment in the study of the impact of power generation on water represents the kind of bold action that is needed to create resilient energy systems and prevent water insecurity. WRI is pleased to partner with the fund as it supports climate solutions, fosters vibrant civil society and promotes research and analysis. Together, we are supporting pilot projects in Asia that can be scaled or mainstreamed to transform the ways society protects the environment and communities.

United Nations Capital
Development Fund (UNCDF)

United Nations Department of
Economic and Social Affairs
(UNDESA)

United Nations Development
Programme (UNDP)

United Nations Environment
Programme (UNEP)

United Nations Office for Project
Services (UNOPS)

World Bank

Anonymous (2)

FOUNDATIONS

Better Tomorrow Fund

Bernard and Anne Spitzer
Charitable Fund

Bill & Melinda Gates Foundation

Blue Forest Finance Inc

Bloomberg Philanthropies

Charles Stewart Mott
Foundation

Children's Investment Fund
Foundation

Climate and Land Use Alliance

ClimateWorks Foundation

Conrad N. Hilton Foundation

The David and Lucile Packard
Foundation

DOEN Foundation

Doris Duke Charitable
Foundation

EAT Foundation

The Educational Foundation of
America

Energy Foundation

Energy Foundation China

Ernesto Bertarelli Foundation

European Climate Foundation

FIA Foundation

The Finnish Innovation Fund
(SITRA)

Ford Foundation

Goldschmeding Foundation
voor Mens, Werk en Economie

Good Energies Foundation

Gordon and Betty Moore
Foundation

Growald Family Fund

Heising-Simons Foundation

John D. and Catherine T.
MacArthur Foundation

The Kresge Foundation

Laudes Foundation

Meyer Memorial Trust

Mulago Foundation

Oak Foundation

Open Society Foundations

Patrick J. McGovern Foundation

Pisces Foundation

Porticus Foundation

Rockefeller Brothers Fund

Rockefeller Foundation

Rockefeller Philanthropy
Advisors

Stichting DOB Ecology
Stichting SED Fund
Swedish Postcode Lottery
The Tilia Fund
Tiny Beam Fund
Wallace Global Fund
The Waterloo Foundation
William and Flora Hewlett
Foundation
World Cocoa Foundation
Anonymous (4)

CORPORATIONS

Strategic Relationships

3M
Bank of America
Cargill, Inc.
Citi Foundation
FedEx Corporation
FEMSA Foundation
Google Inc.
HSBC Holdings PLC
IKEA Foundation

Microsoft
Shell Foundation
Toyota Mobility Foundation
UPS Foundation
Walmart & Walmart Foundation

2019–2020 Corporate Consultative Group Members

3M
Abbott Laboratories
Baker McKenzie
Bank of America

MICROSOFT

Microsoft is aiming to become carbon negative, water positive and zero waste by 2030—and it is on a path to remove its historical carbon emissions by 2050. Corporate actions like this mark a major shift in tackling today’s most pressing issues.

In partnership with WRI, Microsoft is raising the bar on corporate water stewardship. Over the past year, we helped Microsoft set ground-breaking water targets to deliver water-positive impact across its current and future sites. In partnership with BlackRock, Microsoft is supporting the development of Reservoir Watch, the world’s first open-access water modeling tool for assessing near real-time reservoir health and predicting future water resources.

Previously, Microsoft’s AI for Earth partnered with WRI to create an internal innovation fund to advance the use of machine learning and artificial intelligence in our work. Microsoft is a member of WRI’s Corporate Consultative Group, which helps accelerate businesses’ transition toward sustainable practices. We are thankful to have Microsoft as a trusted partner and donor.

Best Buy Co., Inc.
Cargill, Inc.
Caterpillar Inc.
The Chemours Company
Citigroup, Inc.
Colgate-Palmolive Company
DuPont
Equinor ASA
Exelon Corporation
FedEx Corporation
General Mills, Inc.
Goldman Sachs Group, Inc.
Google Inc.
The Hershey Company
HSBC Bank USA, N.A.
Johnson Controls
Kimberly-Clark
Macro Advisory Partners
Mars, Inc.
Microsoft
PayPal Inc.
PepsiCo, Inc.
Pfizer Inc.
Related
Shell
Starbucks Coffee Company
Target Corporation
Temasek
Tetra Pak International
Tyson Foods, Inc.

United Parcel Service, Inc.
Walmart
The Walt Disney Company
VF Corporation
Program/Project Partners
ADM Capital Foundation
Alcoa Foundation
Allotrope Partners
Amazon Web Services
Amazon.com
Ansell Ltd.
Apple Inc.
Arconic Foundation
BASF
BlackRock Inc.
Bunge Loders Croklaan
Caterpillar Foundation
CDPQ
Dairy Management, Inc.
The Danish Agriculture & Food Council
Danone
DLL
Ecolab
Eileen Fisher, Inc.
Facebook, Inc.
Ford Motor Company
FrieslandCampina
Genentech, Inc.
Golden Agri-Resources
Heineken

Hilton Worldwide
Hoge Dennen Holding BV
The Hongkong and Shanghai Banking Corporation Limited
IKEA
International Paper Company
Johnson Controls Foundation
The Kellogg Company
Kimberly-Clark
L'Oreal U.S.A
Mærsk
Mars, Inc.
Max Hamburgerrestauranger AB
Merck and Co., Inc.
McKinsey & Company, Inc.
Mitchells & Butlers PLC
The Mitsubishi Corporation
Fund for Europe and Africa
Monde Nissin Corp
Mondelēz International
Morgan Stanley
Musim Mas Group
Nestlé
Newmont Goldcorp Corporation
Nike, Inc.
Orbia
Ørsted A/S
Ove Arup & Partners International Limited
Panera Bread
PepsiCo, Inc.

Philips
 Procter & Gamble
 Quorn
 Rabobank
 Royal DSM
 RS Group
 Sainsbury's
 Shell
 Sime Darby Berhad
 Sodexo
 Southern Company Generation
 Takeda Pharmaceutical
 Company Limited
 Tennessee Valley Utility
 Tesco PLC
 Tetra Tech
 Tyson Foods, Inc.
 Uber Technologies, Inc.
 Underwriters Laboratories, Inc.
 Unilever
 Wells Fargo
 Weyerhaeuser Company
 Wilmar International Limited

Supporters

Blistex, Inc.
 Bristol Myers Squibb
 Foundation
 CPS Energy
 Dentons
 Pfizer Foundation
 Undertone

**Matching and
 Workplace Giving**

Adobe, Inc.
 Apple, Inc.
 Capricorn Investment Group
 Delta Dental
 Dentons
 Dodge and Cox Matching Gift
 Program
 Erie Insurance
 GE Foundation
 Genentech, Inc
 Goldman Sachs Matching Gift
 Program
 Google Inc.
 International Monetary Fund
 (IMF)
 Intuit
 Kauffman Foundation Matching
 Gifts Program
 LinkedIn
 McKinsey & Company, Inc.
 Microsoft Matching Gifts
 Program
 The Prospect Hill Foundation
 Takeda Pharmaceutical Limited
 Company
 Tencue Productions LLC
 World Bank Community
 Connections Fund

**INDIVIDUALS AND
 FAMILY FOUNDATIONS**

\$500,000+

Acacia Conservation Fund
 Bezos Earth Fund
 David Blood
 MacDoch Foundation
 Stephen M. Ross Philanthropies
 Sall Family Foundation
 Roger Sant
 Bernard and Anne Spitzer
 Charitable Fund
 Ruth McCormick Tankersley
 Charitable Trust

\$100,000-\$499,999

David K. Smoot Sustainability of
 Life on Earth Fund
 Linden Trust for Conservation
 Leon Lowenstein Foundation
 Thomas and Musa Mayer
 The Chris and Melody
 Malachowsky Family
 Foundation
 Polsky Foundation
 The Summit Foundation
 Anonymous (1)

\$10,000-\$99,999

Abelow Family Foundation
 The Rona and Jeffrey Abramson
 Foundation
 The MGDC Apgar Foundation
 Tammie Arnold

BEZOS EARTH FUND

In late 2020, WRI received a major grant from the Bezos Earth Fund. The \$100 million, five-year grant will support the development of a satellite-based system that will monitor carbon emissions and identify potentially harmful changes to the world's forests, grasslands, wetlands, farms and other critical areas. It will also catalyze the electrification of U.S. school buses, improving air quality and reducing carbon emissions across the country. We are grateful to Jeff Bezos and Lauren Sanchez for their generous support.

John E. Bartlett	Peter Fox-Penner	Samuel Krasnik & Kathleen Corless
Frances Beinecke	Maria Gea and John Niccolai	Herbert and Katherine Kurth Religious Foundation, Inc.
Elizabeth Belfer	GML Giving Back	Alice Lam and Ziba Scott Giving Fund
Afsaneh M. Beschloss/The Woodland Foundation, Inc.	Peter Graham and Heidi Drymer	Joaquim Levy
Bluestein Family	Douglas Harmon	The Ingeborg Lock Trust
Boger Family Foundation Inc.	James Harmon	Ann MacDougall and Jules Kaufman
Stephen Brenninkmeijer	Nancy Hammond	The Matz Family Fund
Sally Cameron	Cynthia R. Helms	Jeff and Ashley McDermott
Mount Blue Fund of the Essex County Community Foundation	Margaret M. Hixon/ The Margaret M. Hixon Fund	Kathleen McLaughlin
William A. Chen	Margaret VB. Hughes	Wilhelm Merck and Nonie Brady
Cox Family Fund	Andrew W. and Lauran Jack	Leo Model Foundation
Tim Disney	Julie Juenemann	The Morrow Family Fund
Timothy Dunn and Ellen Stofan/ Black Dog Foundation	Richard Johnson	Myers Family Charitable Fund
Brean Epp	Ulla Johnson	AB Nadiv Foundation
Irene Fee	Kane Family Partnership/ The Morton and Merle Kane Philanthropic Fund	Jeff Nathanson
Pam and Peter Flaherty	Kay Family Foundation, Inc./ The Ina Kay Foundation	The Nint Foundation
Patrick Flynn	Knight Britton Charitable Fund	The Nowak Family Charitable Remainder Trust
G.O. Forward Charitable Trust		

ARTS AND ACTIVISM FOR A SUSTAINABLE OCEAN ECONOMY

Last year, WRI completed an innovative collaboration with students at the California Institute of the Arts (CalArts). WRI Global Leadership Council member and supporter Tim Disney invited WRI's ocean experts to work with students to create art projects to raise public awareness of threats to the ocean and encourage young people to take action. Although the pandemic forced the cancellation of the 2020 UN Ocean Conference, it did not dampen the enthusiasm of the CalArts students, whose projects included upcycled apparel, a habit-changing app, a culture-jamming campaign exposing illegal fishing practices and an Instagram-based approach to promote sustainable seafood. The work was shared with ocean experts throughout WRI's global network, as well as with CalArts faculty and alumni.

“The combination of science, art and activism is a powerful way to create the culture change we need to address complex issues like climate change, ocean health and social justice. I was proud to bring these two distinguished organizations together.”

—Tim Disney, Chairman, CalArts,
and WRI Global Leadership Council member



“The Drop Project,” by Hannah Saidiner (Film/Video BFA 21),
Jessica Peng (Art BFA 20) and Eleonora Stella Oei (Film/Video BFA 21).

Thomas A. Nowak, M.D.
Andra Patterson
Pritzker Innovation Fund
The Prospect Hill Foundation
David W. Richardson, CFA
Ms. Heather L. Ross and
Mr. Edward L. Strohhahn, Jr.
Sharon and Russell Rumberger
Sally Mead Hands Foundation
Gregg Sciabica
Liesbet and Andrew Steer
Ann Sullivan Giving Fund
Amy and Mark Tercek
Foundation
Sue and John Tierney
Lee and Dorothy Thomas/
The Thomas Family Foundation
Tse Foundation
Clint and Sandi Vince Charitable
Foundation
Benjamin Wagner
Daniel Weiss/Angelino Group
Robert Zoellick
Anonymous (9)

**Sustainer's Circle
Members
(\$1,000-\$9,999)**

Steve Adams/Steve and Jayne
Adams Charitable
Andrea Adler
The Aeneid Fund of the Jewish
Communal Fund
Caitlin Agrell

Mark and Meg Alberts
Bradley E. Alger
Dominic and Kristina Allori
Eleanor and Dean Anderson
Ruth Anderson
Elaine and Arthur Aron
Associated Students of the
University of California
Atkins Donor Advised Fund
Austin Family Fund at
Community Foundation
of Western Massachusetts
Steven Averbuch and
Rachel Rivest
Kenneth and Lee Bakalar Fund
Benjamin M. Baker
Charitable Fund
Girish Balakrishnan
Justin Baldauf
Donald A Baughman
and Roberta E Swain
Charitable Fund
Bonnie J Beck
Beebe Family Charitable Fund
Ellen and Guillermo Bernal
Family Foundation
Vicki Berry
The Berryman Family
Charitable Fund
Alexis Beshara/
Ophelia & Rey LLC
Linda Beyce
The Birenbaum Family Fund
Lynn Blainey

The Jeffrey and Julie Blake
Charitable Fund
Robert O. Blake, Jr.
Sylvia Blake
Joel Blum
Emily Bluth
Nancy Bobowiec
Tomas Bok and
Florentien de Ruiters
B. Jay Bortz
Bray-Sugg-Nuccio-Selby Family
Katrina Brighling/IPMI
Edward Brittenham/
Brittenham Family Gift Fund
Adrienne and Andrew Bro
Steven Brock
Janet Brownstone and
Andrew W. Verhalen Fund
Richard and Alison Bruce
Laurie and Brice Buchanan
Judy Buechner Advised Fund
Jefferson Bull and
Marilyn Packard-Luther
Richard Burck and Alice Hecht
Ildefonso Burgos
Robert Burt
Tiia Carswell
Kenneth Chang and Julia Espel
Jennifer Lyn Chu
Gwendolyn Cohen
Brendon Colburn
Myra Collard

Brian Collins and Madhuri Kahsyap	Diane Davidson	Colin and Beth Faucett
Kira and David Connaughton	Alfred DeAngelis	Eva Fernandez
Michael Connolley	Rao DeCato Family Charitable Fund	Mary Fields
David Cook	Kathryn Deegan	Wendy Fiering and Tim Kieschnick
Elizabeth Cook	Rabecca Delamotte and Peter Bloom	Mark E. and Sharon Fine
Spence Cook Philanthropic Fund	Yafang Deng	Dennis Fisher
Barbara Cooper	Peter and Gretchen Detre Charitable Donations Account	Bonnie L. Fischer
Kathleen Cooper	Jenn and Mike DiPietro	Craig and Diane Fischer
Janice Cooperstein	Bonnie and Rick Dlott	Ronnie Fischer
The Peter and Elisabeth Cormier Charitable Giving Fund	Andrea Dodge	The Fitzharris Family
Courage and Community Foundation, a Donor Advised Fund of Renaissance Charitable Foundation	Conor DuBois	Gilbert Flanagan
Terrell Cox	Brad Eastwood	Maureen Flannery
David Cushing	Debbi Echt	Agnieszka Flizik
Charlene Yaunke Cutler	The David Geoffrey Elkins Fund	Robert Floyd
Leslie Dach and Mary Dickie	The Elson Family Charitable Fund	Art and Nora Forni Charitable Trust
N. Dahlin Giving Fund	Mark and Glori Engel	Lisa and Jim Fox
Stephen Dahm	The Episcopal Church	Mary and Paul Fox Charitable Fund
The Dalton Gang Inc	Richard Epstein	Judy Frandson and Michael Bonine
Nancy Dalton	Nancy and Jeff Evelhoch	Richard Fromer
Danem Foundation	The Faretheewell Foundation	Fuller Family Foundation
	Adam Fass	Christopher Gardner
	Shannon Fast	Edward Gardner



“ When I saw the similarities between WRI’s priorities and my own, I knew WRI would be a choice for donations from me I plan to also include WRI in my will.”

—Jeanne Musgrove, Legacy Society Member

Judith Gayer	HEB Foundation	Mayya Kawar
Susan Gerngross	Janet Hendricks	Ezra Jack Keats Foundation
Daniel and Catherine Gerst	Dr. and Mrs. Robert Henry	Sam Keel
Ian Glover	Hertzman Foundation	Bernadette Keirsej
Carl Gobel	Amy and Ziggy Hirsch	RT Kempner Family Fund
Dr. Linda Gochfeld Charitable Fund of the Princeton Area Community Foundation	Matthew Hirschland	Jeeyoon Kim
Goldberg-Smith Trust	Ho Chen Family Foundation	Taeun Kim
Scott and Shari Goldstein	Wiley Hodges	Bob Kirby and Brownlee McKee
Madeleine Gottlieb	Ian Hooley	Valerie Kirkby
Graves Family	Leslie Hope	Diana Kirschner
Vickie Greenhouse	Daniel House	The Big Sky Knox Family
Emily Gropp	Brandon Hubbard	Satish Kodali
James Guiry	Brad Huber	Leslie Kornstein Giving Tree
Gordon Guyant	Peter and Katie Hulseman	Tanya Kranenburg
Jason Gwinn	Humanity Foundation	Michael and Anne Krepick Charitable Gift Fund
David P. Hackett/David and Kelly Hackett Foundation	Melissa Huther	Sujatha Krishnakumar
Byron Hall	Natalie Ichertz and David Barker	Ms. Maja Kristin/ Family and Beyond
Craig Hamilton	Zephyr Isley Charitable Gift Fund	Stan Kromar
Craig and Iben Hanson	JAB Charitable Giving Fund	William A. Krug
Susan Hansz	Eric M Jackson	Wayne and Kathy Kubick
Beverly Hargraves	Hilary Rosenblum Jefferson	The Kurtz Family Foundation
AJ Harradine	Zachary Jefferson	Laczay Family Fund
Kathryn Harris	Charles Jennings	LAD Climate Fund
Teresa Hartle	Jilli Joffe	Francois Laithier
John and Sheila Harvey	Charles and Phyllis Johnson	Gayatri Lakshmanan
Ellen Hastings	Susan Johnson	Judy Lamana
Anita L. Hatanaka	Kathryn Johnstone	Tania Landauer
David Hays	Amanda Jones	Gordon Latta
Carolee and Jon Hazard	Justine Jordan	Ginny Lee
	Bradley Kaplan	

Richard Lee	Ben Millis	Richard W. Orser
Toy Lee Giving Fund	Sari Mintz and Gary Morrison	Bartosz Ostenda
Laura and Paul Leppert	Kathleen and David Mislan	Dr. Hal E. Ott
Lauren W Leung	Ryan Molton	Jyoti Patel
William Levan	Eleanor Moore	Priyesh Patel
JuJun Liong	Scott Mordock	Ronak Patel
Jian Liu	Dylan Morris	Andrea Patineau
George Loening	Karen Morris	Linda and Wesley Patterson
Thomas E. Lovejoy III	Morris Fund	Mr. and Mrs. James L. Patton, Jr.
Lov GetTogether Inc	Carole and Harold Moskowitz Family Foundation	Patricia Pearson
Martin Lueker	Helen Mountford and Vladimir Lopez-Bassols Charity Fund	Carol K. Pforzheimer and Carl A. Pforzheimer Fund
Larry L. Luing Family Foundation, Inc.	Aubert and Barbara Mowry	Salil Phadnis and Meghana Mudiyam
Jay Mansavage	The Murray Family Foundation	Hartley Phinney
Marion Charity Fund	Jeanne A. Musgrove	Cameron Pitt
Allie Martens	The NHRG Private Foundation	Plasser Family
The Marxe Family Foundation	Nesler Family Fund	Akshat Podar
Thomas May	Bob and Toni Newton	Point House Fund
Bill and Carol McClain	Josepha Nicola	Beth and Ted Powers-Johnson
Don and Alison McCormack	Jillian Niggel	Lester Poretsky Family Foundation
McCormick Family Giving Fund	Michael Nigro	David Porteous and Vicky Smith Account
Maia McCormick	Sisi Nimbus	John Pratt
Donald McCurdy	Matthew Nimetz	Amy Price
Kathleen and Steve McGavock	Nurmukhanov-Kale Charitable Fund	Ellen B. Proctor
Patrick McIntosh	Robin O'Brien	William Putnam
Nathan McKenzie	Charles John O'Byrne	The Putnam Family Charitable Fund
Katherine Johnson Mclean	Carol O'Hare	N. Rajgopal
Meg Metzger Fund of the Whatcom Community Foundation	Kim Olson	John G. Rakocy/John G. Rakocy and Family
Larry and Eileen Miller	Christopher and Sara Oot	
Robert Miller	Daniel Orfield	

Lisa Rasmussen Charitable Account
Anil Reddy
Alex Reeve
William and Elizabeth Reilly
Elly Richards
The Grace Jones Richardson Trust
David Robbins
Robinhood Cove Fund of the Essex County Community Foundation
Dorothy Robyn
Frank Rogg
Douglas M Rothrock Charitable Gift Fund
Roxbury Fund of the New York Community Trust
Victor Roytburd
Rubin Family Fund
Michael and Pooja Rutberg
Andrew Sabin Family Foundation

Edward and Diana Sabin
Kathy and Gary Salvner
Sandblast Productions
Naomi Saunders
Tedd and Ella Saunders
Lisa Schlecht
The Schmitz-Fromherz Family Fund
Stephanie Schultz
Pam Schulz
Howie and Alison Schwab Family Fund
Schwartzman Moss Family Fund
Patrick Scott and Susan Kraft
Steven and Maria Scroggs
Jennifer Scully-Lerner
Gottfried Sehringer
Frank Seidman
Shah Family Charitable Fund
Shanok Foundation Inc.
Cynthia Shen

Shepperd Family Charitable Fund
Ben and Leah Sherman
Judith and Arnold Siegel
Silton Family Foundation
Silver Tie Fund
Padmakshi Singh
Peter Slade/Taylor, Ganson & Perrin LLP
Cyn Slaughter and Kevin FitzGerald
Jane and Carl Smith
Sidor Smith Family Charitable Fund
The Snider Foundation
Henry Warren Snipes
Ethan Snow
Stanley Snyder
Social Good Fund
Jonathan and Cleo Sonneborn Advisory Fund
Drew Sorrels
Spark Directed Fund



“ WRI stood out to us as an organization that tackles environmental sustainability and climate change while promoting the well-being of the communities they work with. We also noted that WRI is highly rated by Charity Navigator, which gave us confidence that our dollars are being wisely spent.”

—Bill and Carol McClain, Sustainer’s Circle Members

Paul M. Spiegel
Michael Spiegelman
Richard Stanley
Jocelyn Starzak
Christopher Stephens
Stratton Charitable Fund
Janet Strickler TSSF
Maryellen Sullivan
Maureen and Dennis Sullivan
Laurie Svec
Sweat Family Foundation
Jonathan Sweet
Scott Tabakman
Helga Tarver
Jui Tataria
Timon P. Tesar
Barbara J Tigert
David H. Thomas
Aaron and Karla Thompson
Daena Title
Victor Torgrimson
Robert Trone

Dan Tunstall
Laura D. Tyson
Steve J. Usdan
Greg T. VandeKerk
Ariane van der Straten
Watering Pond Foundation
Marilyn Weber
Elizabeth Webster
Caroline Weller/Banjanan
Andrew Whalley
Peter and Renee Whitehead
Anne Wilkes
Gregory Todd Williams
N. Noel Wilson
Sandra K. Wilson
Richard Winegar
Dale Winter and Emily Russell
Laura Woodland
John Ziemer
Barry Zingman
Anonymous (105)

Other Institutions

7Summits LLC
American Forests
Aspen Institute
The Benevity Community Impact Fund
Carbon Disclosure Project, North America
CDC Group PLC
Central Arkansas Water
Coffey International Development Limited
Conservation International Colombia
Duke University
Environmental Defense Fund
Erie Insurance
F20 Foundations
Farmers Restaurant Group
Fonds Climat et Energie
Forum for the Future
Germanwatch
Global Center on Adaptation



Harvard University	Pact	Wildlife Conservation Society
Hatch Inc	Pacific Institute for Studies in Development, Environment, and Security	The Windward Fund
Humanist Institute for Cooperation with Developing Countries (Hivos)	Red Ventures, LLC	Winrock International Institute for Agriculture Development
IDH Sustainable Trade Initiative	Renewable Energy Buyers Alliance	World Economic Forum
IHE Delft Foundation	Spring Point Partners	World Wildlife Fund
International Center for Tropical Agriculture	Stanford University	Anonymous (6)
International Monetary Fund	Stockholm International Water Institute	GIFTS IN KIND
Institute for Sustainable Community	The Sunrise Project	Accenture
Lawrence Berkley National Laboratory	Tamarack Habilitation Technologies	The Bank of New York Mellon
LTS International Limited	True Costs Initiative	Boston Consulting Group
Mineral Economics and Management Society	U.S. Endowment for Forestry and Communities	Dentons
National Geographic Society	University of Oxford	Descartes Labs
Natural Resource Governance Institute	University of Tokyo	ESRI
The Nature Conservancy	Vital Strategies	Ford Foundation
Network for Good	WAP Sustainability Consulting	Google
New America	Waste and Resources Action Programme	Johnson Controls
Night Light Marketing Concepts, LLC	WattTime	Microsoft
Open Data Charter	West Virginia University	National Geographic Society
		Nicholas Goedekeing
		NYU Marion Institute
		World Bank

Photo Credits

Cover: *Workers on boats install solar panel brackets at the construction site of a fishery-solar hybrid photovoltaic power station on March 4, 2021 in Hefei, Anhui Province of China*, Getty Images; P. 4: Rajeev Malagi/WRI India; P. 8: WRI/Bill Dugan; P. 10 WRI/James Anderson; P. 15: Victor Moriyama/WRI Brasil; P. 16: pradeep_kmpk14/iStock; P. 18: WRI/Molly Bergen; P. 19: Zhang Chen, WRI/Zahara Milele; P. 20: Flickr/Yousuf Tushar; P. 21: Unsplash/american Public Power Association; P. 22: iStockphoto, unsplash/Michael Cragg; P. 23: Unsplash/Chuttersnap, Ella Olson; P. 24: WRI; P. 26: Unsplash/Hardik Joshi; P. 32: WRI Turkey Sustainable Cities/Gürcan Öztürk; P. 34: Flickr/I. Municipalidad de Santiago; P. 36: WRI Brasil/Joana Oliveira; P. 38: WRI Brasil/Filipi de Moraes; P. 52: WRI/Sabin Ray.

Support Our Work

Your financial support powers WRI's ability to turn ideas, data and analysis into action.

ONLINE GIVING

Donating to WRI online is easy, fast and secure. Help us protect the Earth and improve people's lives.

RECURRING GIFTS

Ensure that WRI has dependable resources to deliver transformative solutions.

PLANNED & ESTATE GIFTS

Designate WRI as a beneficiary in your will or estate plans and create a lasting impact that adapts system-wide change to sustain people and the planet.

WORKPLACE GIVING

Increase the impact of your gift by asking your employer to match your contributions to WRI.

STOCK, BONDS AND MUTUAL FUNDS

Donating your appreciated securities is an easy, tax-efficient way to support WRI's cutting-edge research and projects.

Visit [WRI.org](https://www.wri.org) to learn more and support our mission today.



WORLD
RESOURCES
INSTITUTE

10 G STREET NE
SUITE 800
WASHINGTON, DC 20002, USA
+1 (202) 729-7600

Africa | Brazil | China | Europe | India | Indonesia | Mexico | United States

[WRI.org](https://www.wri.org)