

# COUNTIES, BY LANGUAGES

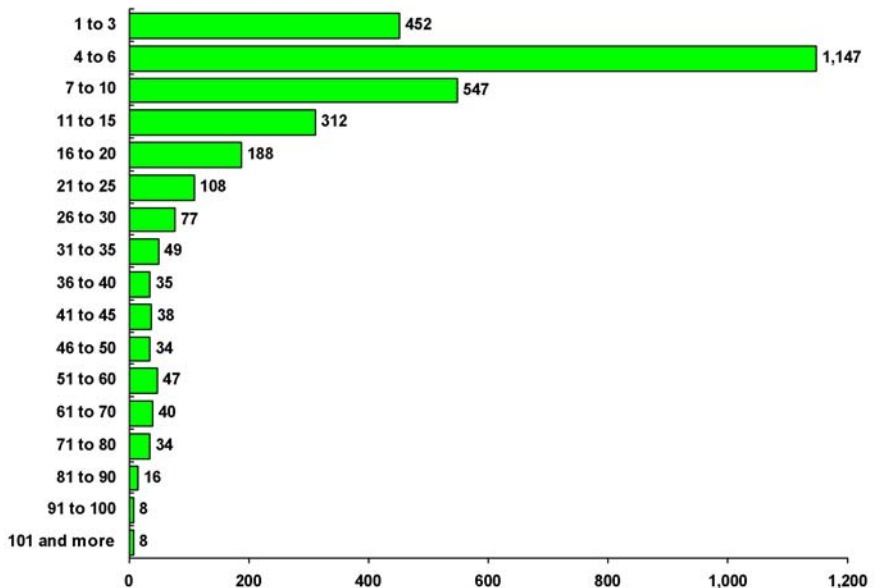
Counties in the United States: 3,141

The chart below displays the total number of languages recorded as being spoken at home in the 3,141 counties of the United States (subject to Census confidentiality protections). Each figure should be looked at as a minimum number, as it is likely that each and every county in the United States had at least one additional language that was not reported due to confidentiality protections, or was not found by the sample done by the Census.

For example, there were 10 counties where only one language was recorded as being spoken at home, accounting for 0.3 percent of the nation's 3,141 counties. There were 137 counties where two languages were recorded as being spoken at home, accounting for 4.4 percent of the nation's counties.

Languages	Counties	Pct.	Languages	Counties	Pct.	Languages	Counties	Pct.
1	10	0.3%	51	4	0.1%	76	2	0.1%
2	137	4.4%	52	5	0.2%	77	4	0.1%
3	305	9.7%	53	8	0.3%	78	1	0.0%
4	515	16.4%	54	5	0.2%	79	5	0.2%
5	380	12.1%	55	3	0.1%	80	1	0.0%
6	252	8.0%	56	6	0.2%	81	1	0.0%
7	200	6.4%	57	3	0.1%	82	2	0.1%
8	153	4.9%	58	5	0.2%	83	1	0.0%
9	113	3.6%	59	3	0.1%	84	5	0.2%
10	81	2.6%	60	5	0.2%	85	2	0.1%
11	74	2.4%	61	6	0.2%	86	2	0.1%
12	74	2.4%	62	1	0.0%	87	0	0.0%
13	53	1.7%	63	1	0.0%	88	1	0.0%
14	65	2.1%	64	4	0.1%	89	1	0.0%
15	46	1.5%	65	5	0.2%	90	1	0.0%
16	34	1.1%	66	6	0.2%	91	1	0.0%
17	47	1.5%	67	2	0.1%	92	1	0.0%
18	45	1.4%	68	6	0.2%	93	0	0.0%
19	28	0.9%	69	4	0.1%	94	1	0.0%
20	34	1.1%	70	5	0.2%	95	0	0.0%
21	18	0.6%	71	3	0.1%	96	3	0.1%
22	22	0.7%	72	6	0.2%	97	1	0.0%
23	29	0.9%	73	2	0.1%	98	0	0.0%
24	24	0.8%	74	5	0.2%	99	0	0.0%
25	15	0.5%	75	5	0.2%	100 or more	9	0.3%
26	20	0.6%						
27	18	0.6%						
28	13	0.4%						
29	12	0.4%						
30	14	0.4%						
31	17	0.5%						
32	7	0.2%						
33	10	0.3%						
34	11	0.4%						
35	4	0.1%						
36	10	0.3%						
37	8	0.3%						
38	8	0.3%						
39	6	0.2%						
40	3	0.1%						
41	8	0.3%						
42	7	0.2%						
43	8	0.3%						
44	10	0.3%						
45	5	0.2%						
46	8	0.3%						
47	7	0.2%						
48	10	0.3%						
49	2	0.1%						
50	7	0.2%						

Number of Counties with a Range of Languages Spoken



For information on how the data was derived, see Disclaimer