

---

---

## Chapter 6

### Becoming One

---

---

*“Prestige is itself difficult to evaluate, but a combined society with a broader scope and an increased membership can be expected to be looked on with greater respect by other professional groups as well as by its own members. The merged society should be better able to sustain full and unquestioned leadership in covering professional engineering in matters in Refrigeration, Heating, Air Conditioning and Ventilation.”*

E. R. Queer  
1958

In the first decade of the 20th century, The American Society of Heating and Ventilating Engineers had little in common with the newly formed American Society of Refrigerating Engineers. This soon began to change, however, as heating and ventilating engineers learned to control humidity by using mechanical refrigeration equipment to cool the air. Willis Carrier’s epic paper on rational psychrometric formulae published in 1911 established the scientific basis that he and others would use to promote the concept of conditioning the air.

In the 1920s, this new field of air conditioning was further advanced by exploding technological accomplishments in the household refrigeration industry. Made possible by the entry into the industry of manufacturers with mass market production ability and the capital necessary to finance new technology, these new developments included direct expansion systems, extended surface condensers and evaporators, thermostatic valves and hermetically sealed compressors.

The overall significance of these events was that air conditioning became a field of interest to

both the members of the heating and ventilating engineer’s society and to the refrigerating engineers.

As heating systems evolved from steam and hot water to forced warm air systems, combining the heating and air-conditioning functions, the American Society of Heating and Ventilating Engineers in 1954 changed its name to the American Society of Heating and Air-Conditioning Engineers. That same year, the Refrigerating Engineers mailed proxy ballots to its membership proposing to add Air Conditioning to its name, but too few votes (both pro and con) were received and the proposal was lost.

By the 1950s, there was significant overlap in the research programs and in the meeting sessions of the two societies. There was a large cross-



---

Much of this chapter is drawn from “The Merger of ASHAE and ASRE” written by Presidential Member Frank H. Faust, which appeared in the May 1992 issue of *ASHRAE Insights*.

over membership as well, with many members of the two societies, particularly the leadership, attending annual, semi-annual and regional meetings of both organizations.

Consolidation of the two societies had been considered as early as the 1920s. Willis Carrier, president of ASRE in 1927 and ASHVE in 1931, was an early proponent. A plan for consolidation had been defeated in 1937, and in 1941, a joint committee operated to review the ASHVE and ASRE relationship. Joint meetings of the two organizations were held in Cleveland (1932), Buck Hill Falls, Pennsylvania (1936), and New York City (1938).



**Willis Carrier**  
An early proponent of consolidation, he campaigned for the term "thermal engineers."

By 1954, with talk of overlapping interests greater than ever before, it was clear to the leaders of both societies that closer cooperation was required. To achieve this, a joint Committee on Cooperation was formed. When first appointed, the objective of the committee was to determine how the societies could cooperate without consolidating. As the committee's work progressed, however, the idea of merger gained wider acceptance. In 1956, two ASHAE regions put forward suggestions for merger. By 1958, about 1,000 people belonged to both ASHAE and to ASRE. ASHAE's membership total was 11,700 and ASRE's was 7,000. About 60% of activity in each society was devoted to air conditioning.

<p><b>SEMI-ANNUAL MEETING 1936</b></p> <p><b>THE INN BUCK HILL FALLS</b></p> <p><b>JUNE 22-24</b></p>	<p><b>PROGRAM</b> ALL EVENTS SCHEDULED ON DAYLIGHT SAVING TIME</p> <p><b>TECHNICAL</b> Tuesday, June 23, 1936</p> <p>A.M. 8:30 Breakfast Meeting of Nominating Committee (Bluestone Room, Lower Lobby, The Inn; Meeting—Room, 233)</p> <p>9:30 JOINT SESSION of ASRE and A.S.H.V.E., W. H. Carrier presiding: Theory and Practice of the Heat Pump, by C. W. Chamberlain Application Factors Which Govern the Selection of Refrigerating Equipment for Air Conditioning Service, by J. R. Hertzler Water Supply as Affected by the Demand for Summer Air Conditioning, by D. C. Morrow Progress in Air Conditioning in the Last Quarter Century, by W. H. Carrier</p> <p>P.M. 12:15 Joint Luncheon—Councils of A.S.H.V.E. and ASRE (Main Dining Room, The Inn—Buck Hill Falls) Meeting of Guide Publication Committee (Luncheon—Main Dining Room, The Inn; Meeting—Room 233)</p>
---	--

The principal problem facing a merger was opposition by individuals interested in only limited segments of the industry. These people included the ice and cold storage industry, domestic refrigeration industry, the steam and hot water heating industry and the ventilation and exhaust-air industry.

In June, 1958, the councils of each society approved the Proposed Merger Plan drafted by the Committee on Cooperation. The plan next would be mailed to ASHAE chapter presidents and ASRE section presidents to stimulate discussion at the local level.



**E.R. Queer**  
ASHAE President in 1958 said, "The Merger Plan is expected to permit increased services to each member, and also provide a sufficiently broad and varied program to insure something for every member. There should be no neglected minority groups."

and so established as not to interfere with the current practice of having local group dues as now done by ASHAE...."

There was much debate, especially within ASRE. C.F. Holske, ASRE President in 1948, wrote, "As to common interests in air conditioning, competitive operations generally produce more and better results than unilateral operations.... I suggest you vote NO to the merger proposal."



**H.F. Spoehrer**  
ASRE President in 1958 said, "We cannot ignore the repeated requests from many members who have an interest in air conditioning and who would welcome a merger."

ASHAE President Elmer Queer outlined the premises for the merger. "An extensive research program similar to that now conducted ASHAE would be carried out by the merged Society.... The Society would continue to conduct a comprehensive program in the development of codes and standards, as now carried out by ASRE. The merged Society would furnish financial support to local groups, similar to the present practice of ASRE,



**C.F. Holske**  
ASRE president in 1948 urged a "NO" vote to the merger.

Cecil Boling, president of ASRE, crossed the country, explaining details of the plan. "Personally, I have no feelings except for the preservation of the hard-won standing of ASRE and for the welfare of the interests represented by its members and its programs. However, it is my earnest conviction that the march of time, the inevitable shifts of technology, the present and undoubtedly to-be-continued emphasis upon newer factors within what was once a predominantly refrigeration situation, lead to the conclusion that what is best for ASRE is a merger which will permit broader coordinated development in two closely allied fields where the common problems are the transfer of heat and the circulation of air... Today it is really not a question of whether ASRE and ASHAE should merge but of when."



**Cecil Boling**  
"As President of ASRE, I am truly neutral as to the possible merger; as an individual member I have my opinion and vote."

As required by the Membership Corporations Law of New York State, the Plan for Merger was submitted to the memberships of ASHAE and ASRE. To become effective, the plan would re-

quire the approval of each society by two-thirds of those voting, either by proxy or in person.

At a special meeting held in Chicago on December 1, 1958 in the Conrad Hilton, ASHAE members overwhelmingly approved the plan, with 5,307 voting in person or by proxy in favor and only 405 against.

ASRE's vote was held at the opening session of its Annual Meeting in New Orleans on December 1. Crosby Field, ASRE president in 1938 and a staunch opponent of the merger, was next to President Boling until 4:40 in the morning as the proxies were counted. When all votes were tabulated, 86% of ASRE's members had voted with 3,516 in favor and 1,293 against.

Milton Garland, an ASRE member at the time, remembers of the merger, "I was against it, but, of course, I stayed with the Society because if that's what the majority wanted, that's the way we should have gone. But I

## Some Questions and Answers Regarding

## the Proposed ASRE-ASHAE Merger

**Q. How are you going to keep the merged Society upon the high level of engineering competency that has long been the role of ASRE?**

**A.** The level of engineering competency of any Society will depend upon the interest and activity of the individual members. Any worthwhile plan would have to anticipate this and provide the framework within which it might be effective.

**Q. Why wasn't a vote taken among the members of both Societies first to determine whether they want a merger, and then have a plan developed afterwards if the vote indicated that a merger was desirable rather than in the reverse order?**

**A.** Your governing body, the Council, felt that it was desirable to have a plan for the merger of the two Societies to submit to the membership for vote so that they would have a clear picture of what would happen should the two Societies be consolidated. If members were asked to vote without a merger plan how could they anticipate that specific problems could or would be handled?

**Q. What is there in common between the interests and problems of refrigerated warehouse builders and operators and the corresponding activities of those who work with industrial blowers and space heaters?**

**A.** The answer to this question is naturally that the common bond is the transfer of heat and movement of air. It was because of this particular question that the plan as set up provides for operation of a divisional basis of heating, refrigeration, air conditioning and ventilating.

**Q. ASHAE has a Standards Program. ASHAE has a Research Program. Will these be maintained separately, or will there be an overall Research activity?**

**A.** The plan anticipates the maintenance of a Standards Program comparable to that being carried on by ASRE at

present and if possible to be on a more expanded basis. It is further anticipated that the ASHAE Research Program will be expanded to take care of the requirements of refrigeration.

**Q. If progress requires that ASHAE and ASRE merge what assurance do we have that there will result a more dynamic, effective Society rather than just a larger one? Does this not call for an extension of purpose and program beyond the relatively narrow limits of engineering only?**

**A.** The plan as drawn anticipates that the new Society would provide additional rewards for the benefit of present ASRE members, a letter overall monthly publication, more stress on membership activities particularly the encouraging of letter section meetings and programs. However, it must be remembered that it is still up to the members to see that this will be so and the plan can only provide the framework for such accomplishment. It does not seem logical that the new Society would have to go beyond the relatively narrow limits of engineering as other all engineering is its foundation as it is with the two Societies today.

**Q. Why shouldn't the members be given a longer time to study the proposed merger plan and give it consideration before being asked to vote? The time between now and December is too short.**

**A.** This is answered, I believe, in detail in the President's Page in this issue.

**Q. If there are 16 employees too many managers, there must be too many men. What specific things are we asked to eliminate in terms of services and functions?**

**A.** In any organization where volume is increased, you do not have to increase your personnel proportionately from an administrative standpoint. This is the

main reason that it is possible in the consolidation of the two Societies to consider a reduction in staff as compared to the two operating separately. The plan of consolidation does not eliminate service to the members and from the study made, it was felt that the organization outlined could handle the work. Naturally it might be that some additional assistance may be necessary in certain categories although it was felt that the entire plan was set up conservatively.

**Q. Who profits (benefits) by the merger?**

**A.** Unless the members of both Societies benefit from the merger, the idea of the merger is not sound. This is a basic question each member must answer for himself before he votes for or against the merger in December. No particular individual or group will make any money out of this consolidation.

**Q. Who is going to pay for all this? It is stated that ASHAE will lose substantial income in the shift to the publishing of its Journal Section. How will this be offset?**

**A.** It is expected that we would have a greatly stepped up advertising sales organization and promotional program to accomplish the sale of the required additional advertising. Increased circulation would tend to create a more attractive advertising medium. Any losses would naturally come out of the surpluses of the combined Societies.

**Q. If the merger is approved in December, why must it be put into effect immediately? Why should it not be made effective a year, or a year and a half from December in order to give further time for study?**

**A.** After a merger is voted, the new Society takes over just as soon as the papers are legally cleared by the State of New York except for any interim steps as may be outlined in the plan for merger. There is no doubt would be operating details that could take a year or two to straighten out but the operation must be legally under the new Society.

### Answers to these questions have been provided by ASRE President Cecil Boling

**Q. There seems to be a vague element in the wording of Guide and Data Books. Why should there be so many? Why not consolidate, combine and replace for not more than two different volumes?**

**A.** Under the present plan, as regards the Guide and Data Books, the plan for the transition period was worked out by the Publications Committees of both ASRE and ASHAE. There is considerable sentiment that the transition period is taking too long and is too cumbersome and it appears that the two committees or the Publications Committee of the new Society, if the merger is voted, should go to work on this and see if they can simplify the program.

**Q. How large a publication will the new Society sponsor? Twice as many editorial pages call for corresponding printing costs. Can the new paper double the advertising that appears in REFRIGERATING ENGINEERING How soon?**

**A.** It has not been decided how large the new monthly publication would be; however, it was expected that we would get at least 50% more advertising which would certainly permit the new magazine to handle 50% or more additional editorial pages, including Membership circulation would double upon merger and provide a more attractive advertising base. Non-member circulation would be expected to increase also.

**Q. Solem, if ever, does 10% of the ASRE membership attend a National Meeting. What about Section Meetings under merger? How Sections tend to develop around local activities, interests and connections with specialized engineers. So do the Chapters of ASHAE. Is it not true that there is less community of interest between local Sections (ASRE) and Chapters (ASHAE) than there is at the national level? How can this be unified?**

**A.** It is true that within the 10% of the ASRE membership attend a national meeting and this applies to ASHAE meetings too, except at annual meetings at its show time. It would not be ex-

pected that the new Society would do better because there is apparently a problem of cost to consider. The same situation applies to a great extent to Sections, although in the smaller Sections, if it is possible under the new plan that they would be able to have better programs and better meetings. In certain areas, there is considerable community of interest between the local Sections of ASRE and ASHAE but in the more metropolitan areas, there is not much community of interest. It is quite possible that in the larger metropolitan areas there would be a continuation of separate meetings along divisional lines but this would not be true in the less metropolitan areas where even today ASRE and ASHAE local Sections are cooperating and meeting together with frequency. Regional technical meetings would have an important part in this.

**Q. Is this merger being proposed because of any problems financial or otherwise within ASRE, or is there some other reason?**

**A.** There is no financial problem in ASRE and, therefore, this is in no way being proposed for consideration as regards the merger. The only reason for consolidation would be to combine the resources of a large number of our members and reduce in the community of interest within the two Societies.

**Q. Our nominal three-day national meetings actually occupy almost five days for active members with committee duties. How long a meeting would combined activities call for?**

**A.** The question of the length of the national meetings has not been settled but it is understood that they would be set up as to cover the necessary technical programs, conferences, forums and the like and that might save some extension in time. It was felt that by the use of concurrent programs and careful timing of committee meetings, and the like, that there would be no need to extend the meetings at least not more than another day.

**Q. Presently, new ASRE members tend to be more numerous in the Atlantic and Midwest areas than in the full Membership. Will our members be upgraded or downgraded in a merger? If further downgrading occurs what will we have to do to meet our engineering and science men?**

**A.** We see no reason under the plan that

the new Society would be downgraded. It should hold the present standards of both Societies as regards membership. For the benefit of each Society of the consolidated Society, it is necessary that there be a continual and constant effort to upgrade more to full membership.

**Q. ASRE is committed to an "interest" in participating in the new Engineering Center in New York and to go along with other National Societies in this program. Is ASHAE committed and would the merged Society maintain that plan as a long-range objective?**

**A.** It is anticipated that the new Society would have its headquarters at the Engineering Center in New York as would ASRE and ASHAE operating separately.

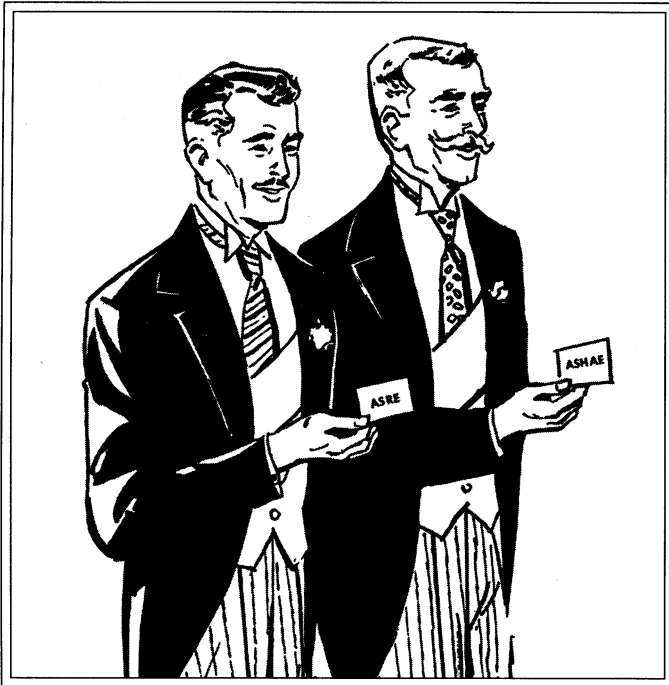
**Q. Sections and Section Meetings are the basis upon which such a Society as ASRE rests; much the same can be said of ASHAE, in its Chapters. There are many members who have never attended a National Meeting—perhaps never will. Their participation is less for technical reasons than those of acquaintance and fellowship. How are you going to make them care about individuals and groups with widely different interests and with whom they consider they have nothing in common?**

**A.** As pointed out in a previous question, in certain areas, there is already considerable community of interest between Sections of ASRE and the Chapters of ASHAE. However, the plan visualizes these problems and it is expected that in certain areas, the local Sections will operate on a divisional basis or as will be explained in the Plan, there will be various alternative methods for the local Sections to operate depending upon what seems best for the area. Regional meetings would be an additional component of the plan and should accomplish much toward this end.

**Q. Because ASHAE has more members than ASRE, will ASHAE in effect absorb ASRE and will it dominate the activities of the merged Society?**

**A.** This plan is specifically set up so that there is no basis for feeling that ASHAE is absorbing ASRE. In fact, every effort has been made in the plan to set up the new Society on an equal basis.

Members who have their own questions are invited to submit them for answers in later issues of REFRIGERATING ENGINEERING. Within the limits of subject duplications and available space, an endeavor will be made to provide factual replies to all such requests for information. See President's Page this issue.



know quite a few of the refrigeration people dropped out at the time. It was obvious that the refrigeration people were going to lose control simply because there are far more people in the heating and ventilating business, and there always will be."

Cecil Boling recalled discussion about what the new organization should be named. Among the suggestions was the Society of Environmental Engineers. Ultimately, Boling said, "We decided to stick with history." This satisfied many ASRE members who wished to make sure that "refrigerating" would not disappear from the name of their new society.

The approved plan called for elected officers of ASHAE and ASRE to serve alternating six-month terms. Cecil Boling served as the first president of ASHRAE from January 1959 to June, followed by Arthur J. Hess, the last president of ASHAE. Mr. Hess had been sworn in as ASHAE president on the evening of January 28, 1959, and served until the next day when the consolidation became effective. John Everetts, Jr., served the first full-year term as president of ASHRAE, June 1961 to June 1962.

On the morning of January 29, 1959, the needed documents were filed in the office of the Secretary of State in Albany, New York. Thus in its 55th year, the American Society of Refrigerating Engineers ceased its corporate existence, and in its 65th year the charter of the American Society of Heating and Air-Conditioning Engineers was amended to bring into corporate existence the consolidated American Society of Heating, Refrigerating and Air-Conditioning Engineers.

**SOME FACTS AND FIGURES ABOUT ASRE, ASHAE AND PROPOSED ASHRAE**

All data herein quoted have been taken from the official Plan of Merger as submitted to Councils and available in complete form upon request of members.

<b>Date of incorporation</b>				
	ASRE 1905	ASHAE 1895		
<b>Total number of members</b>	ASRE 7000 (app)	ASHAE 11,300 (app)	ASHRAE 17,300 (est)	
<b>Local Sections or Chapters</b>	ASRE 52	ASHAE 72	ASHRAE 84	
<b>Geographical Regions</b>	ASRE 9	ASHAE 7	ASHRAE 10	
<b>Membership corporation—State of New York</b>	ASRE Yes	ASHAE Yes	ASHRAE (prop)	
<b>Council or Board of Directors Members</b>	ASRE 20	ASHAE 17	ASHRAE 24	
<b>Standing, Council or General Committees</b>	ASRE 20	ASHAE 14	ASHRAE 25 (tent)	
<b>Full Member dues</b>	ASRE \$25.	ASHAE \$25.	ASHRAE \$25.	
<b>Staff members</b>	ASRE 24	ASHAE 46 (includes laboratory staff)	ASHRAE 54	
<b>Member of Engineers Joint Council?</b>	ASRE Yes	ASHAE Yes	ASHRAE (planned)	
<b>Annual budget data</b>	ASRE	ASHAE	Combined	ASHRAE
income	\$417,207.	761,095.	1,178,302.	1,137,000.
expenses	\$427,540.	642,231.	1,069,771.	1,113,500.
<b>Invested funds</b>	ASRE \$147,507.	ASHAE 190,202.	Combined 337,709.	
<b>Publications</b>	Magazine	Transactions	Journal	Standards
ASRE	Yes	No	No	Yes
ASHAE	No	Yes	*	No
ASHRAE	Yes	Yes	**	Yes
	Research Reports	Meetings Preprints	Article Reprints	Roster
ASRE	No	Yes	Yes	Yes
ASHAE	Yes	No	Yes	Yes
ASHRAE	Yes	Yes	Yes	Yes

\*Published as a Section of Heating, Piping and Air Conditioning  
\*\*Becomes part of ASHRAE Magazine

**MERGED ASRE ASHAE ASHRAE**

Members of The American Society of Refrigerating Engineers and of the American Society of Heating and Air Conditioning Engineers have voted to merge those two societies into the American Society of Heating, Refrigerating and Air Conditioning Engineers, Inc.

The official publication of the Society will be a successor to REFRIGERATING ENGINEERING including Air Conditioning as currently published. The name of the successor publication will be the ASHRAE JOURNAL.

Starting with the March issue this will be the strongest technical publication in the field and a correspondingly powerful advertising medium.

Circulation will be to all members of the new Society, plus non-member subscriptions for a total of approximately 22,000.

Readers will thus be virtually every key man in an engineering capacity in the design, development and specification of equipment, products, components, parts and materials for heating, refrigerating, air conditioning and allied functional fields.

The current rate schedule of REFRIGERATING ENGINEERING will be maintained through the May 1959 issue. New rates will be announced shortly.

It will not be possible for our representatives to contact all our present advertisers, our prospects and their agencies in the interval directly ahead. You will find March to be an excellent opportunity to present your sales message to an alerted and interested audience. Later issues, with their greatly augmented circulation, will be even more important to you in the cultivation of your markets.

Write or phone us for cooperation in handling your requirements for early issues.

**ASRE**

234 Fifth Avenue,  
New York 1, N. Y.  
MUrray Hill 3-6496

**REFRIGERATING ENGINEERING**  
including Air Conditioning

Operation of ASHRAE began with a meeting of its executive committee at 10:30 a.m. at the Bellevue Stratford Hotel in Philadelphia on January 29, 1959.

Elmer Queer wrote in that month's *Refrigerating Engineering* magazine, "An opportunity presents itself for real membership activity in the work to be done at the local level. The basic planning merely sets up guide lines with the chapters having virtual autonomy in organizing to fit local needs. The Regional Directors will provide guidance in solving problems and serve as liaison with the national organization

and with the Board of Directors."

Cecil Boling's prediction was "a future of even greater proportions." He said, "True, numbers alone do not make a great organization. But the give and take of the past few months offers convincing evidence that the members of ASRE and ASHAE have the highest of professional standards, clear-cut objectives for further accomplishments and the sustained ability and willingness to see things through to rewarding ends. ASHRAE will greatly strengthen our profession."

In January 1959, the Executive Committee of the Consolidated Society designated elected officials from ASHAE and ASRE to fill posts in the merged Society.

### OFFICERS AND BOARD OF DIRECTORS

#### JANUARY 1959 TO JUNE 1959

PRESIDENT.....Cecil Boling	4TH VICE PRESIDENT.....Robert H. Tull
1ST VICE PRESIDENT.....Arthur J. Hess	5TH VICE PRESIDENT.....ASHAE
2ND VICE PRESIDENT.....Daniel D. Wile	1ST TREASURER.....ASHAE
3RD VICE PRESIDENT.....Walter A. Grant	2ND TREASURER.....Franklyn Y. Carter
<b>***Hermann F. Spoehrer</b>	<b>**ASHAE</b>
<b>***Elmer R. Queer</b>	ASHAE
<b>***Carlyle M. Ashley</b>	ASHAE
<b>***Leon Buehler, Jr.</b>	John Engalitcheff, Jr.
<b>**William G. Hole</b>	Charles T. Hamilton
<b>**Peter J. Marschall</b>	Everett P. Palmatier
<b>**Weslev O. Stewart</b>	Robert G. Werden
<b>**Percy N. Vinther</b>	Carl R. Fagerstrom
<b>**Frank H. Faust</b>	Ralph A. Gonzalez
Fred Janssen	James W. Snyder
<b>**James W. May</b>	John E. Dube
Gayle B. Priestor	Harold M. Hendrickson
<b>**ASHAE</b>	Si J. Williams, Jr.
	<b>*Willis R. Woolrich</b>
	<b>*Charles L. Hall</b>
	<b>*William F. Wischmeyer</b>
	<b>*Thomas J. Phillips</b>
	<b>*John W. Chandler</b>
	<b>*Russell A. Baker</b>
	<b>*ASRE (1)</b>
	<b>*James P. McShane</b>
	<b>*Charles C. E. Harris</b>
	<b>*Thomas G. Crider</b>
	<b>*William E. Fontaine</b>
	<b>*J. Guy Woodroof</b>
	<b>*George B. Rottman</b>

TOTAL 47

\*ASRE Regional Director. \*\*ASHAE Regional Director. (1) Replacement for T. J. Ammel (resigned)  
 \*\*\*These individuals plus all elected officers constitute the Executive Committee.

### ASHRAE TRANSACTIONS

#### OFFICERS AND BOARD OF DIRECTORS

#### JUNE 1959 TO JANUARY 1960

	PRESIDENT.....Arthur J. Hess
1ST VICE PRESIDENT.....Daniel D. Wile	4TH VICE PRESIDENT.....ASHAE
2ND VICE PRESIDENT.....Walter A. Grant	1ST TREASURER.....Franklyn Y. Carter
3RD VICE PRESIDENT.....Robert H. Tull	2ND TREASURER.....ASHAE
<b>***Cecil Boling</b>	<b>**ASHAE</b>
<b>***Hermann F. Spoehrer</b>	ASHAE
<b>***Elmer R. Queer</b>	ASHAE
<b>***Carlyle M. Ashley</b>	Carl R. Fagerstrom
<b>**Frank H. Faust</b>	Ralph A. Gonzalez
Fred Janssen	James W. Snyder
<b>**James W. May</b>	John E. Dube
Gayle B. Priestor	Harold M. Hendrickson
<b>**ASHAE</b>	Si J. Williams, Jr.
	<b>*Willis R. Woolrich</b>
	<b>*Charles L. Hall</b>
	<b>*William F. Wischmeyer</b>
	<b>*Charles C. E. Harris</b>
	<b>*Thomas G. Crider</b>
	<b>*William E. Fontaine</b>
	<b>*J. Guy Woodroof</b>
	<b>*Thomas J. Phillips</b>
	<b>*George B. Rottman</b>

TOTAL 34



OFFICERS AND BOARD OF DIRECTORS

JANUARY 1960 TO JUNE 1960

PRESIDENT.....Daniel D. Wile  
 1ST VICE PRESIDENT.....Walter A. Grant    3RD VICE PRESIDENT.....ASHAE  
 2ND VICE PRESIDENT.....Robert H. Tull    TREASURER

***Arthur J. Hess	**ASHAE	Si J. Williams, Jr.
***Cecil Boling	ASHAE	*Willis R. Woolrich
***Hermann F. Spoehrer	ASHAE	*Charles L. Hall
***Elmer R. Queer	Harold M. Hendrickson	*William F. Wischmeyer
**ASHAE		10 new members

TOTAL 28

OFFICERS AND BOARD OF DIRECTORS

JUNE 1960 TO JANUARY 1961

PRESIDENT.....Walter A. Grant    2ND VICE PRESIDENT.....ASHAE  
 1ST VICE PRESIDENT..... Robert H. Tull    TREASURER

***Daniel D. Wile	***Cecil Boling	10 Members from period
***Arthur J. Hess	***Hermann F. Spoehrer	January 1960 to June 1960
	***Elmer R. Queer	9 New members

TOTAL 28

OFFICERS AND BOARD OF DIRECTORS

JANUARY 1961 TO JUNE 1961

PRESIDENT—Robert H. Tull  
 1ST VICE PRESIDENT—ASHAE  
 2ND VICE PRESIDENT  
 TREASURER

***Walter A. Grant	***Arthur J. Hess	10 Members from period
***Daniel D. Wile	***Cecil Boling	January 1960 to June 1960
		9 Members from period
		June 1960 to January 1961

TOTAL 27

\*ASRE Regional Director.  
 \*\*ASHAE Regional Director  
 \*\*\*These individuals plus all elected officers constitute the Executive Committee

CONSOLIDATION DOCUMENTS

OFFICERS AND BOARD OF DIRECTORS

JUNE 1961 TO JUNE 1962

PRESIDENT—ASHAE  
 1ST VICE PRESIDENT  
 2ND VICE PRESIDENT  
 TREASURER

***Robert H. Tull	4 New members
***Daniel D. Wile	9 Members from period June 1960 to January 1961
6 Members from period January 1960 to June 1960	3 New members

TOTAL 28

\*\*\* These individuals plus all elected officers constitute the Executive Committee.



The first ASHRAE chapter formed after the ASHAE and ASRE merger was organized in Nashville, Tennessee. Its first meeting was in September 1959. Elections included: I. C. Thomasson, President; Roy L. King, Vice President; Theodore Moats, Secretary; James R. Potter, Treasurer; and Edward Kennedy, Robert Bibb and Farrell Hickerson, Board of Governors.

OFFICIAL PUBLICATION

# ASHRAE JOURNAL

Heating • Refrigerating • Air Conditioning • Ventilating

AMERICAN SOCIETY OF HEATING, REFRIGERATING AND AIR-CONDITIONING ENGINEERS

Successor to both REFRIGERATING ENGINEERING including Air Conditioning, and the ASHAE Journal, the ASHRAE JOURNAL becomes the official publication of the consolidated American Society of Heating, Refrigerating and Air-Conditioning Engineers.

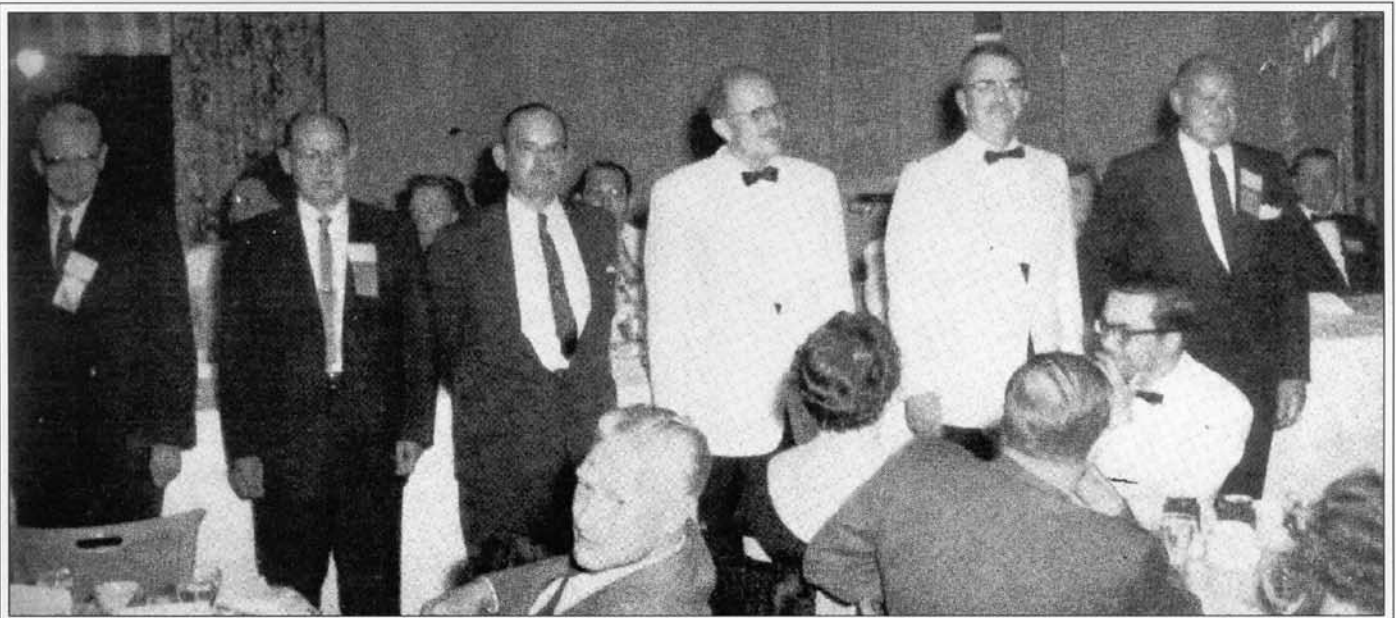
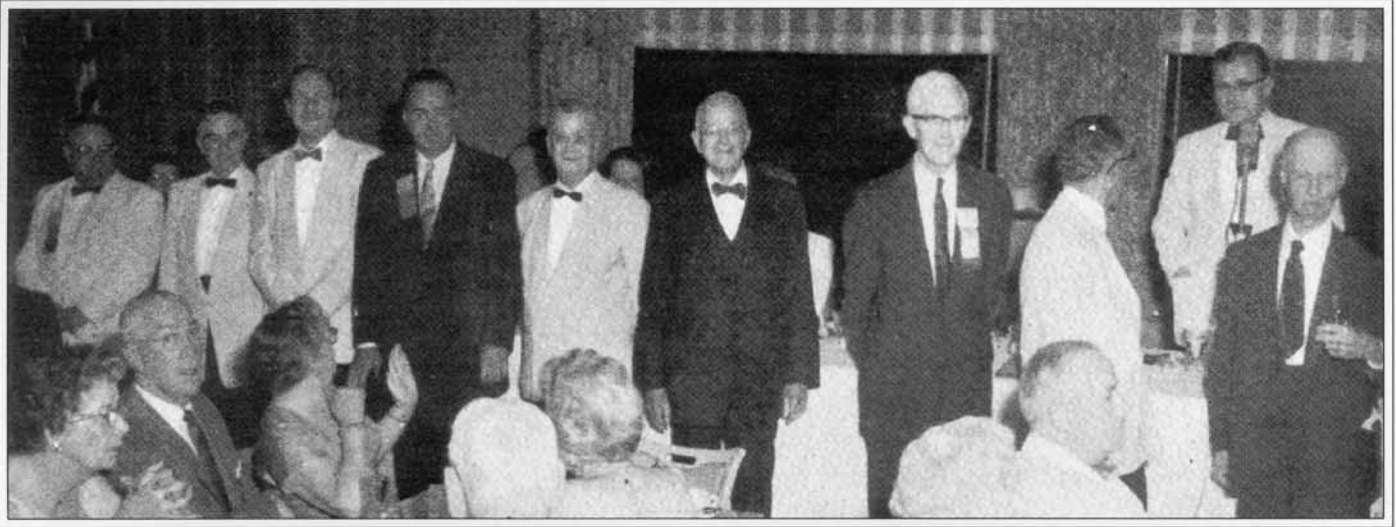
The consolidated Society (1959) has been formed of the merger of the American Society of Heating and Air Conditioning Engineers (1894) and The American Society of Refrigerating Engineers (1905).

There will result new unity and concentrated efforts upon the solution of engineering, research, design, development, installation, application and operation problems of members.

Your ASHRAE JOURNAL will be your foremost guide to news of professional engineering, progress and people in these dynamic fields.

REFRIGERATING ENGINEERING INCLUDING AIR CONDITIONING AND THE ASHAE JOURNAL

MARCH 1959



At the first Annual Meeting of ASHRAE, Lake Placid, New York, 1959 16 past presidents of either ASHRAE or ASRE, or both, received acclaim at the Annual Banquet. Shown above: A. J. Hess, E. R. Queer, J. E. Haines, L. N. Hunter, L. E. Seeley, A. E. Stacey, G. L. Tuve, M. F. Blankin, Cecil Boling, Henry Torrance, Jr., Below: Crosby Field, B. H. Jennings, J. G. Bergdoll, Jr., L. Buehler, Jr., C. M. Ashley, H. F. Spoehrer.

1959 ANNUAL BANQUET

A  
S  
H  
R  
A  
E



TUESDAY, JUNE 23, 1959

*Lake Placid Club*  
In the Adirondacks

**Program**

ANNUAL BANQUET ASHRAE  
June 23, 1959

INVOCATION

INTRODUCTIONS

PRESENTATIONS

By President A. J. Hess  
To Past President Cecil Boling

KLIXON AWARD

To: Dr. H. O. Spauschus  
R. S. Olsen

WOLVERINE AWARD

To: Professor H. M. Hendrickson

DANCING

Agora Auditorium

Music by Paul Jouard  
and his

Lake Placid Club Orchestra

**Menu**

Shrimp Cocktail

Assorted Relishes

Broiled Prime Tenderloin, Bercy

Oven Roast Potato

French Style Green Beans

Princess Salad, French Dressing

Dinner Rolls

Lake Placid Club Ice Cream Pie

Wild Mountain Blackberry Sauce

Tea Coffee Sanka Postum Buttermilk Milk Skim milk